

**An icon
with a
new beat**





OVERVIEW

WORK SPACE

- Specification
- Schedule of areas
- Floor plans
- Indicative visuals
- Space plans
- Gallery

LOCATION

- Connections
- Hot-Spots
- Amenities
- Green Space
- In Good Company
- Gallery



OVERVIEW

Welcome to 88 Wood Street, designed by Richard Rogers Stirk Harbour + Partners and re-imagined by award-winning architects Morrow + Lorraine.

- Best in class, amenity rich work space.
- Brilliantly located within the City of London in close proximity to major transport hubs.
- Light and efficient floorplates.
- Newly remodeled and refurbished reception and end of trip facilities.



OVERVIEW

WORK SPACE

- Specification
- Schedule of areas
- Floor plans
- Indicative visuals
- Space plans
- Gallery

LOCATION

- Connections
- Hot-Spots
- Amenities
- Green Space
- In Good Company
- Gallery



WORK SPACE

Sir Richard Rogers' signature style is instantly recognisable at 88 Wood Street, a modern classic refurbished for a new generation of business. Updates to the existing architecture only serve to complement and enhance the original form and function of this infinitely iconic building.

Warm reception

A welcoming light-filled reception thoughtfully refurbished for quiet contemplation and a flexible approach to work.

Space to breathe

A high-ceilinged space that includes a living feature wall.

End of trip

Increased bike storage with new shower, changing and locker facilities for those who prefer the freedom of two wheels.



SPECIFICATION

OVERVIEW

WORK SPACE

Specification

Schedule of areas

Floor plans

Indicative visuals

Space plans

Gallery

LOCATION

Connections

Hot-Spots

Amenities

Green Space

In Good Company

Gallery



EPC
Rating B



BREEAM in use
Excellent



WiredScore
Platinum



Multi-purpose
wellness studio



Communal
business lounge
and cafe



Fresh air delivered
at 16 l/s/person



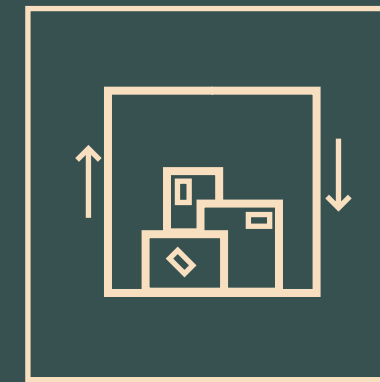
New 4-pipe fan coil
air conditioning



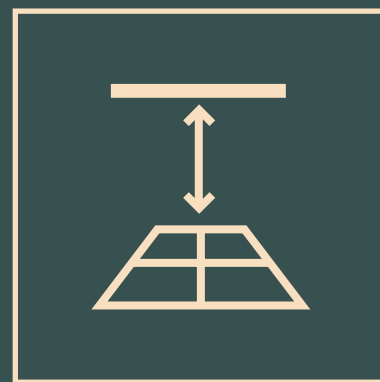
Raised access flooring
with 150mm void



8 x 16 person glass wall-
climber passenger lifts



1 x 2,000kg
goods lift



Floor to raft 2.7m
(3.0m on 1st to 3rd)
Floor to slab 3.3m (3.6m
on 1st to 3rd)



233 cycle racks
(includes 202 double
stacked, 5 accessible &
26 folding spaces)



24 showers plus
one accessible



233 lockers and six
airing cupboards



83 sq m living
wall in reception



MULTI-PURPOSE STUDIO

OVERVIEW

WORK SPACE

Specification

Schedule of areas

Floor plans

Indicative visuals

Space plans

Gallery

LOCATION

Connections

Hot-Spots

Amenities

Green Space

In Good Company

Gallery

The studio offers on-demand immersive workouts & wellbeing classes with a high-definition 3.8m wide screen with Samsung's 'The Wall'. Using music-reactive lighting, best-in-class sound system & 24/7 access, the opportunities for individual or team workouts are free for tenants to use as they please.



LES MILLS+

Offering hundreds of spinning, HIIT, mixed martial arts & barre workouts

EARTH + SKY

A range of yoga, pilates & meditation sessions

myzone

MyZone effort-tracking system with scoring screen. Compete against others, or simply track your own progress

SAMSUNG

Screen sharing capability. Tune in to live events, screen significant meetings, or pitch on an unrivaled screen

FIIT ZWIFT

Apple Fitness+

*Can be shown on screen with personal subscription



SCHEDULE OF AREAS

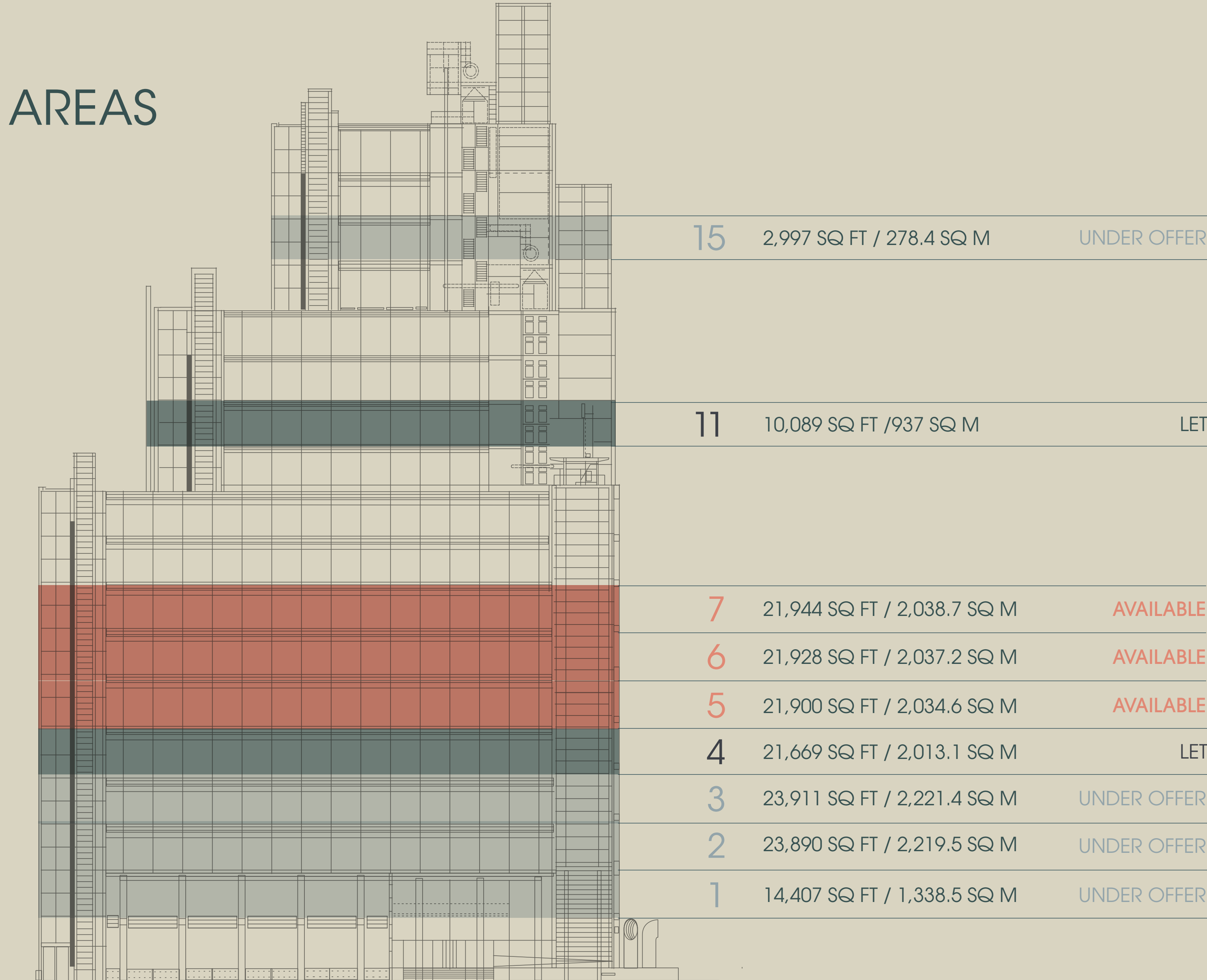
OVERVIEW

WORK SPACE

- Specification
- Schedule of areas
- Floor plans
- Indicative visuals
- Space plans
- Gallery

LOCATION

- Connections
- Hot-Spots
- Amenities
- Green Space
- In Good Company
- Gallery



TOTAL AVAILABLE AREA 65,772 SQ FT / 6,110 SQ M



OVERVIEW

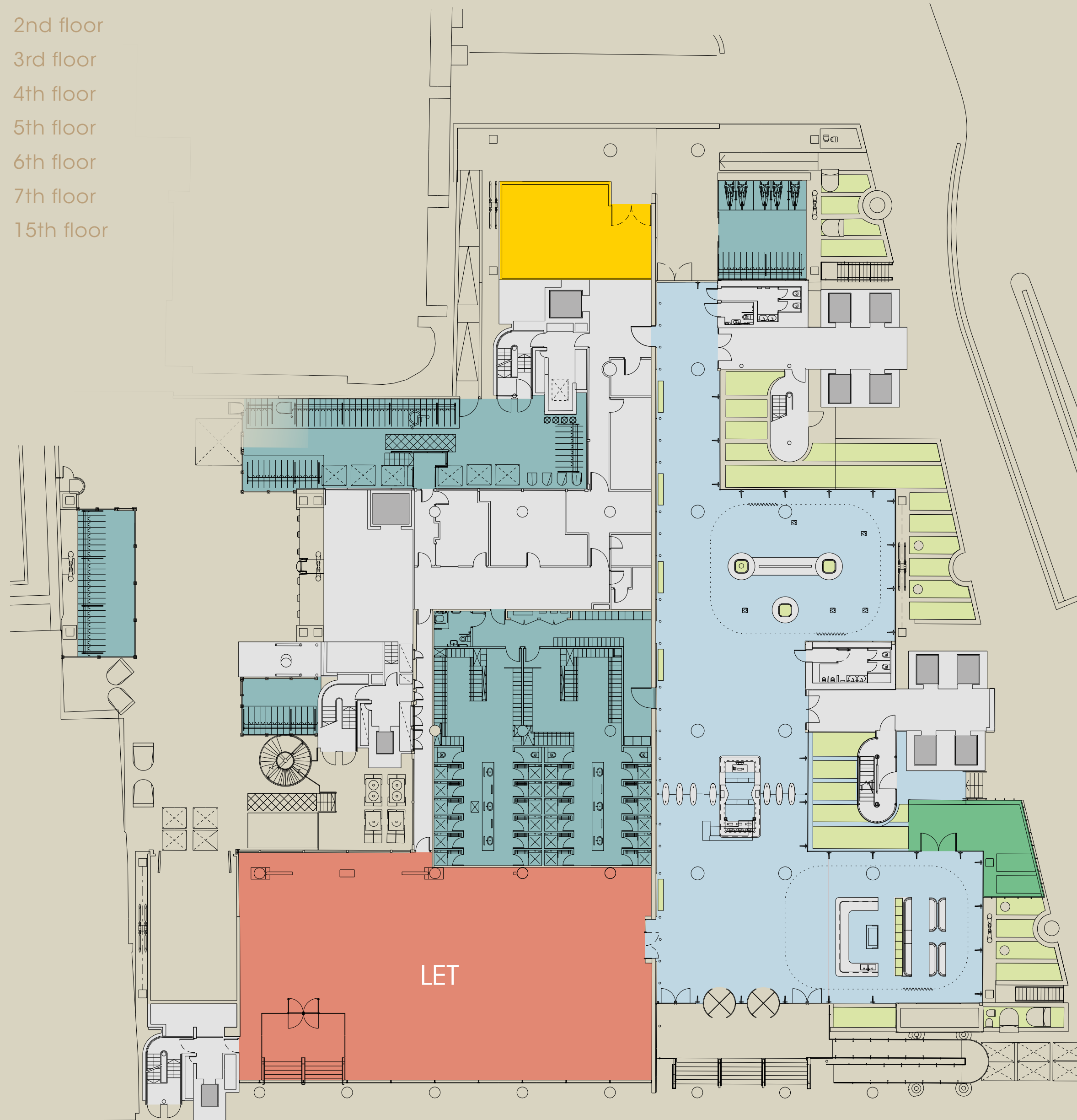
WORK SPACE

- Specification
- Schedule of areas
- Floor plans
- Indicative visuals
- Space plans
- Gallery

LOCATION

- Connections
- Hot-Spots
- Amenities
- Green Space
- In Good Company
- Gallery

- Ground
- 1st floor
- 2nd floor
- 3rd floor
- 4th floor
- 5th floor
- 6th floor
- 7th floor
- 15th floor



GROUND FLOOR

233 CYCLE RACKS (INCLUDES 202 DOUBLE STACKED, 5 ACCESSIBLE & 26 FOLDING SPACES)

233 LOCKERS AND 6 AIRING CUPBOARDS

24 SHOWERS PLUS ONE ACCESSIBLE

KEY

- Office
- Core
- Reception
- End of trip
- Landscaping
- Terrace
- ReFit gym



OVERVIEW

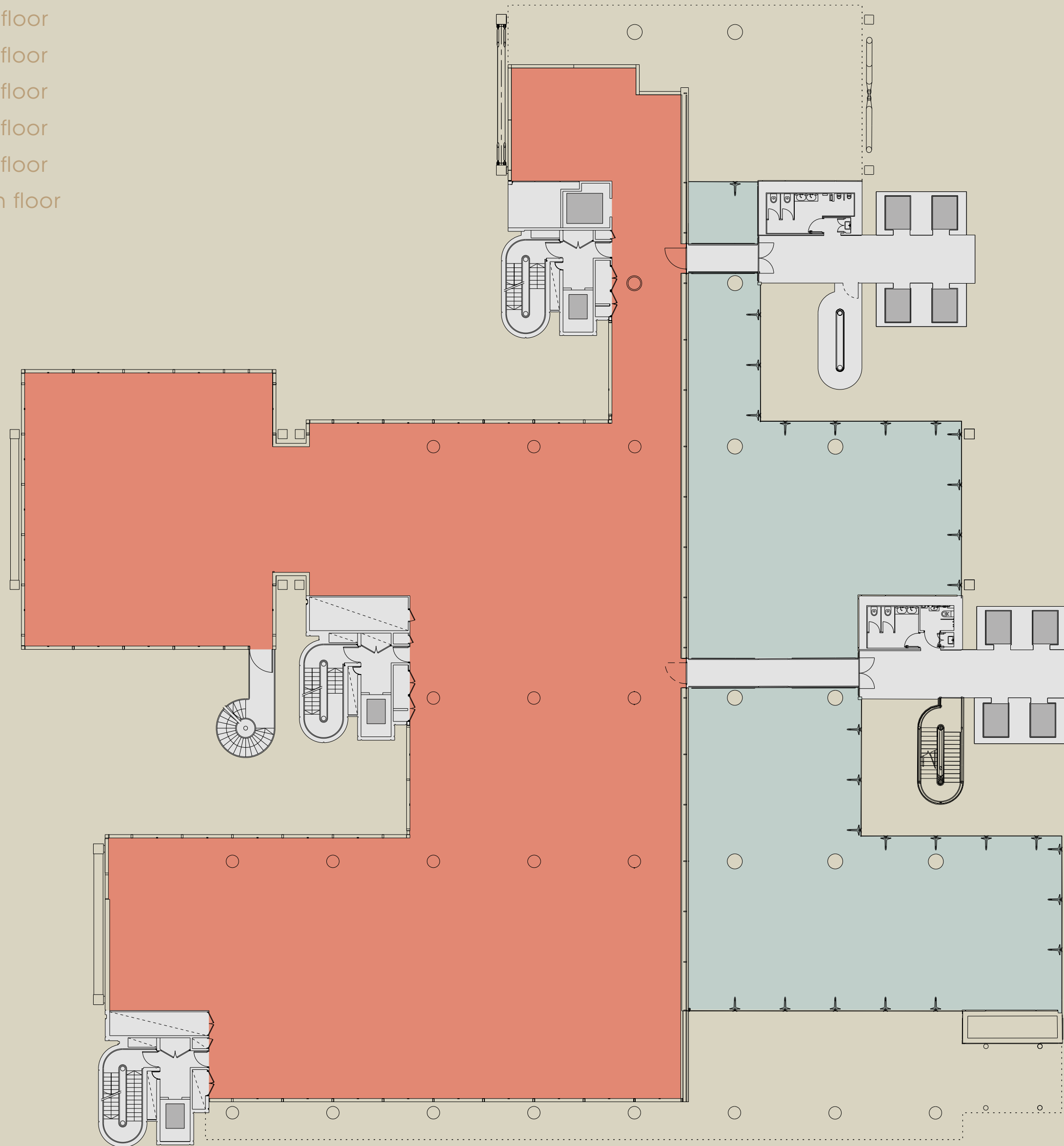
WORK SPACE

- Specification
- Schedule of areas
- Floor plans
- Indicative visuals
- Space plans
- Gallery

LOCATION

- Connections
- Hot-Spots
- Amenities
- Green Space
- In Good Company
- Gallery

- Ground
- 1st floor
- 2nd floor
- 3rd floor
- 4th floor
- 5th floor
- 6th floor
- 7th floor
- 15th floor



1ST FLOOR

14,407 SQ FT
1,338.5 SQ M

- KEY
- Office
 - Core
 - Double-height Reception



OVERVIEW

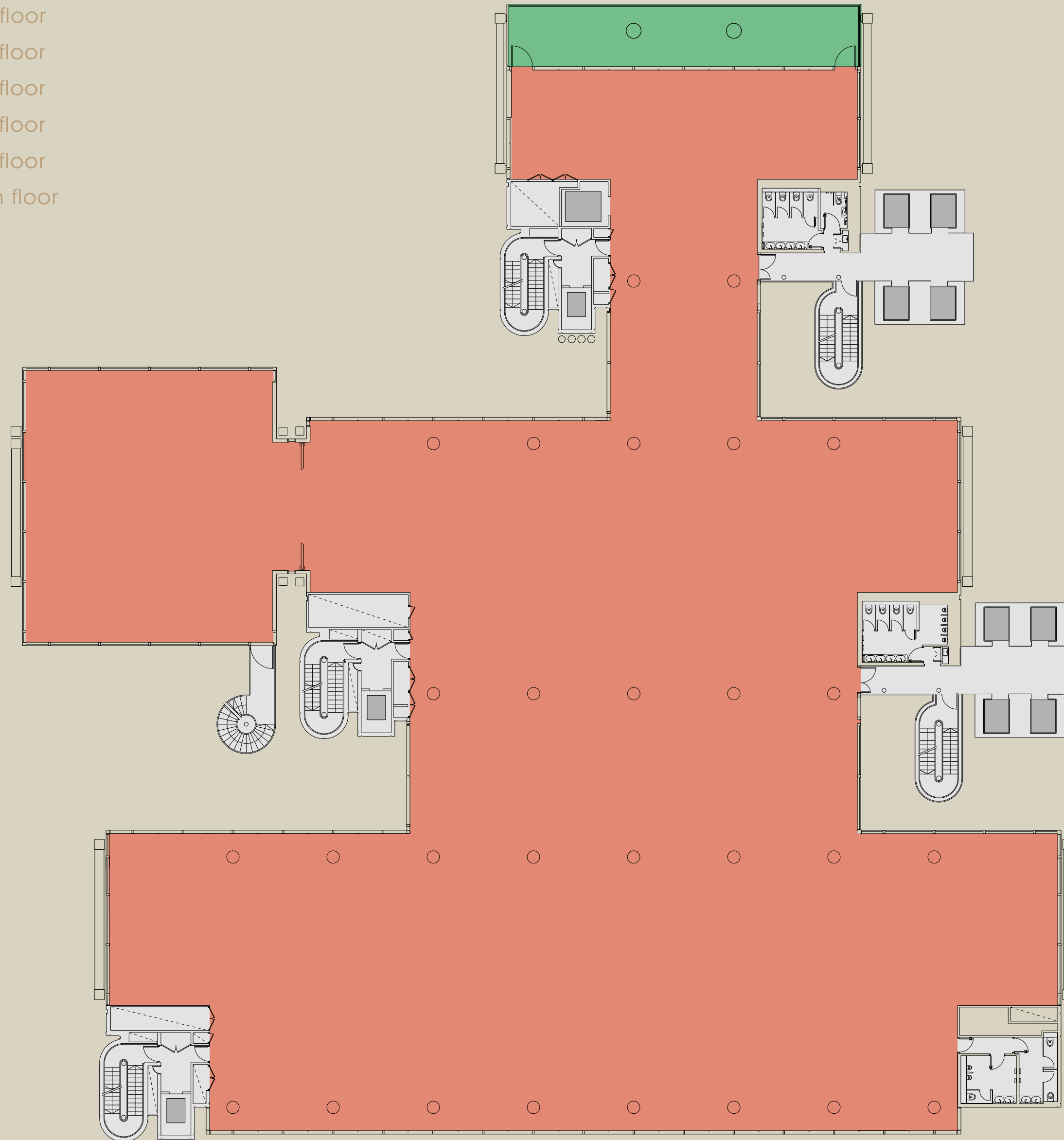
WORK SPACE

- Specification
- Schedule of areas
- Floor plans
- Indicative visuals
- Space plans
- Gallery

LOCATION

- Connections
- Hot-Spots
- Amenities
- Green Space
- In Good Company
- Gallery

- Ground
- 1st floor
- 2nd floor
- 3rd floor
- 4th floor
- 5th floor
- 6th floor
- 7th floor
- 15th floor



2ND FLOOR

23,890 SQ FT
2,219.5 SQ M
Terrace 807 SQ FT

- KEY
- Office
 - Core
 - Terrace



OVERVIEW

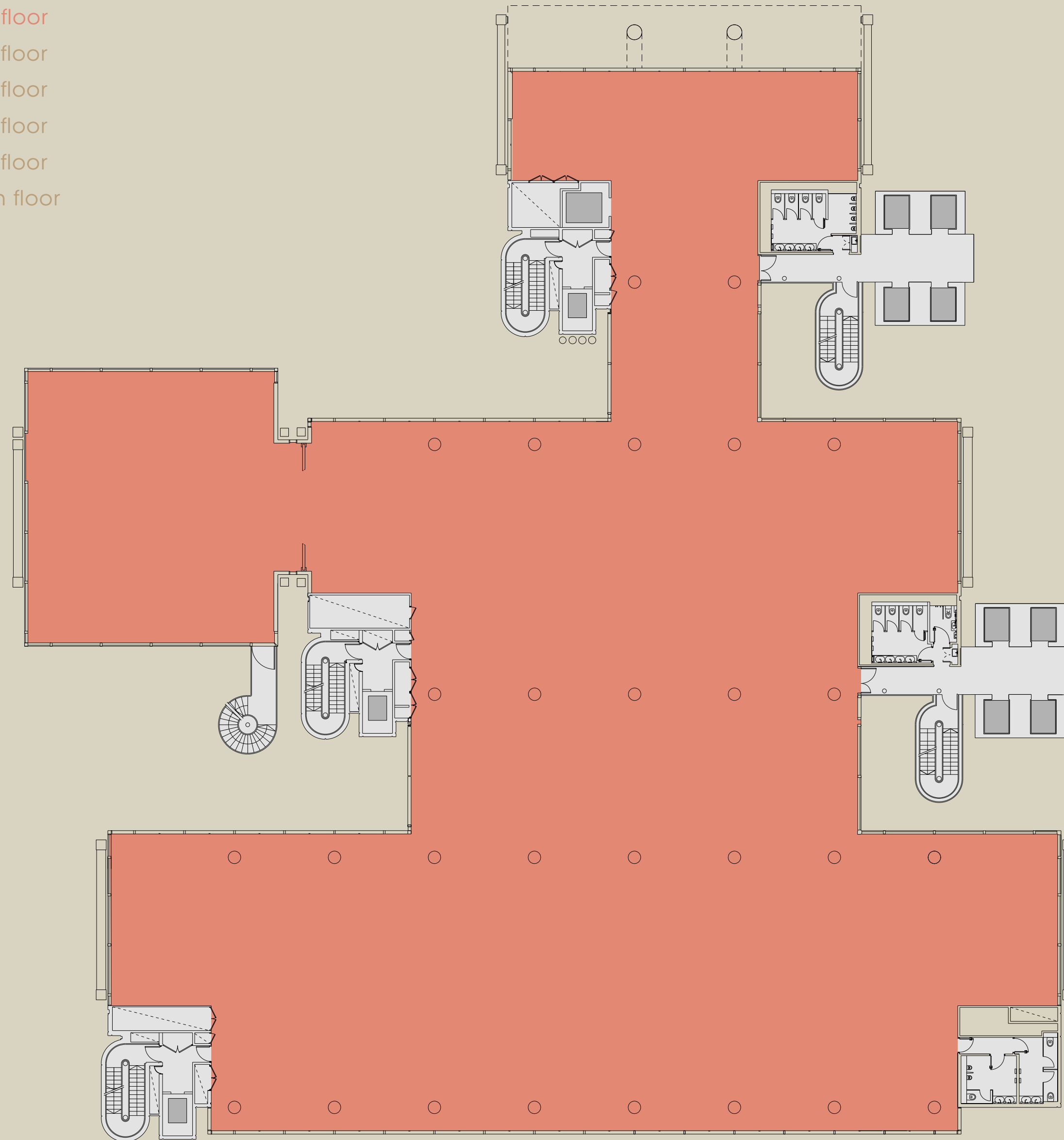
WORK SPACE

- Specification
- Schedule of areas
- Floor plans
- Indicative visuals
- Space plans
- Gallery

LOCATION

- Connections
- Hot-Spots
- Amenities
- Green Space
- In Good Company
- Gallery

- Ground
- 1st floor
- 2nd floor
- 3rd floor
- 4th floor
- 5th floor
- 6th floor
- 7th floor
- 15th floor



3RD FLOOR

23,911 SQ FT
2,221.4 SQ M

KEY

- Office
- Core



OVERVIEW

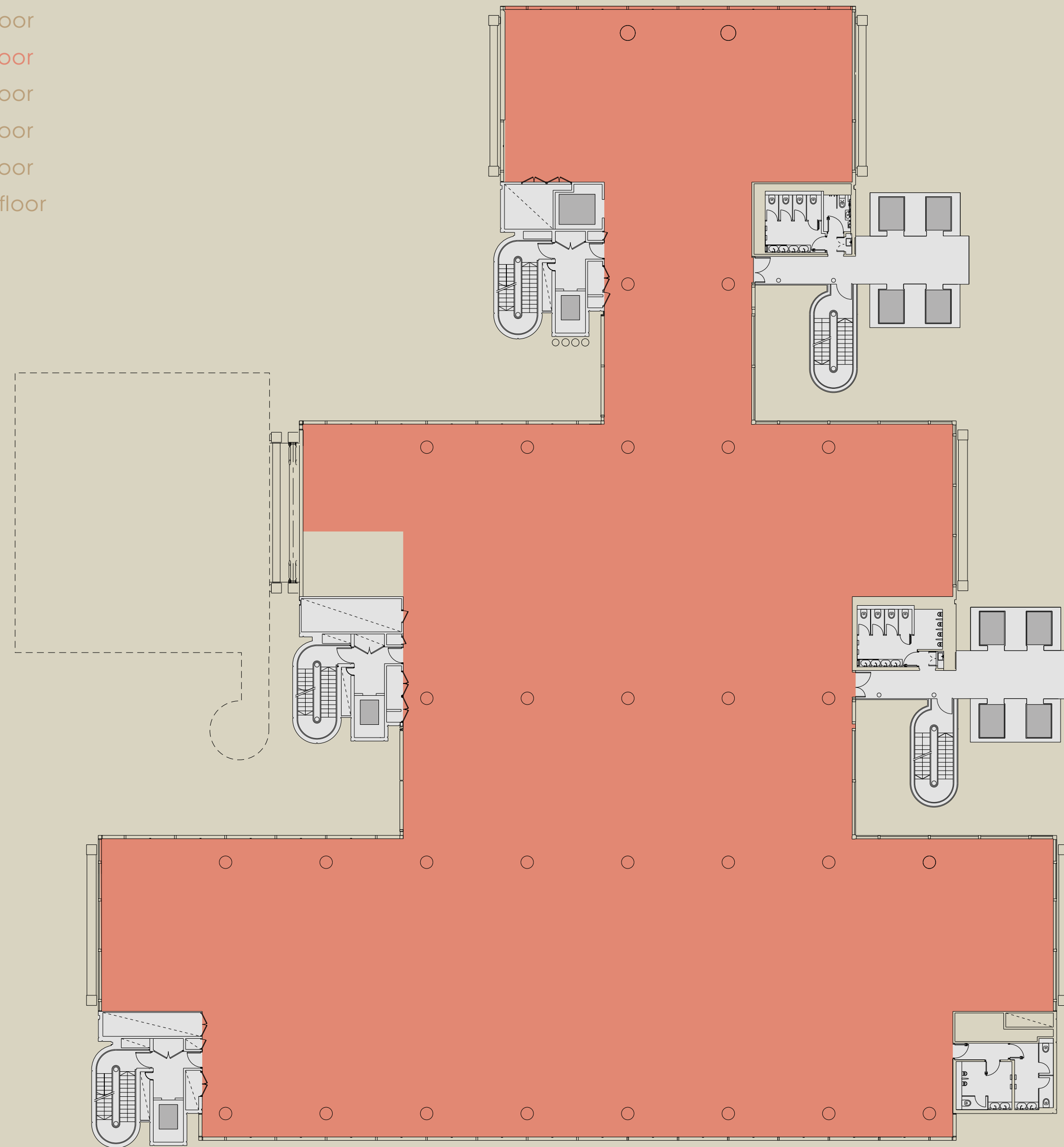
WORK SPACE

- Specification
- Schedule of areas
- Floor plans
- Indicative visuals
- Space plans
- Gallery

LOCATION

- Connections
- Hot-Spots
- Amenities
- Green Space
- In Good Company
- Gallery

- Ground
- 1st floor
- 2nd floor
- 3rd floor
- 4th floor
- 5th floor
- 6th floor
- 7th floor
- 15th floor



4TH FLOOR

21,669 SQ FT
2,013.1 SQ M

KEY

- Office
- Core



- Ground
- 1st floor
- 2nd floor
- 3rd floor
- 4th floor
- 5th floor
- 6th floor
- 7th floor
- 15th floor

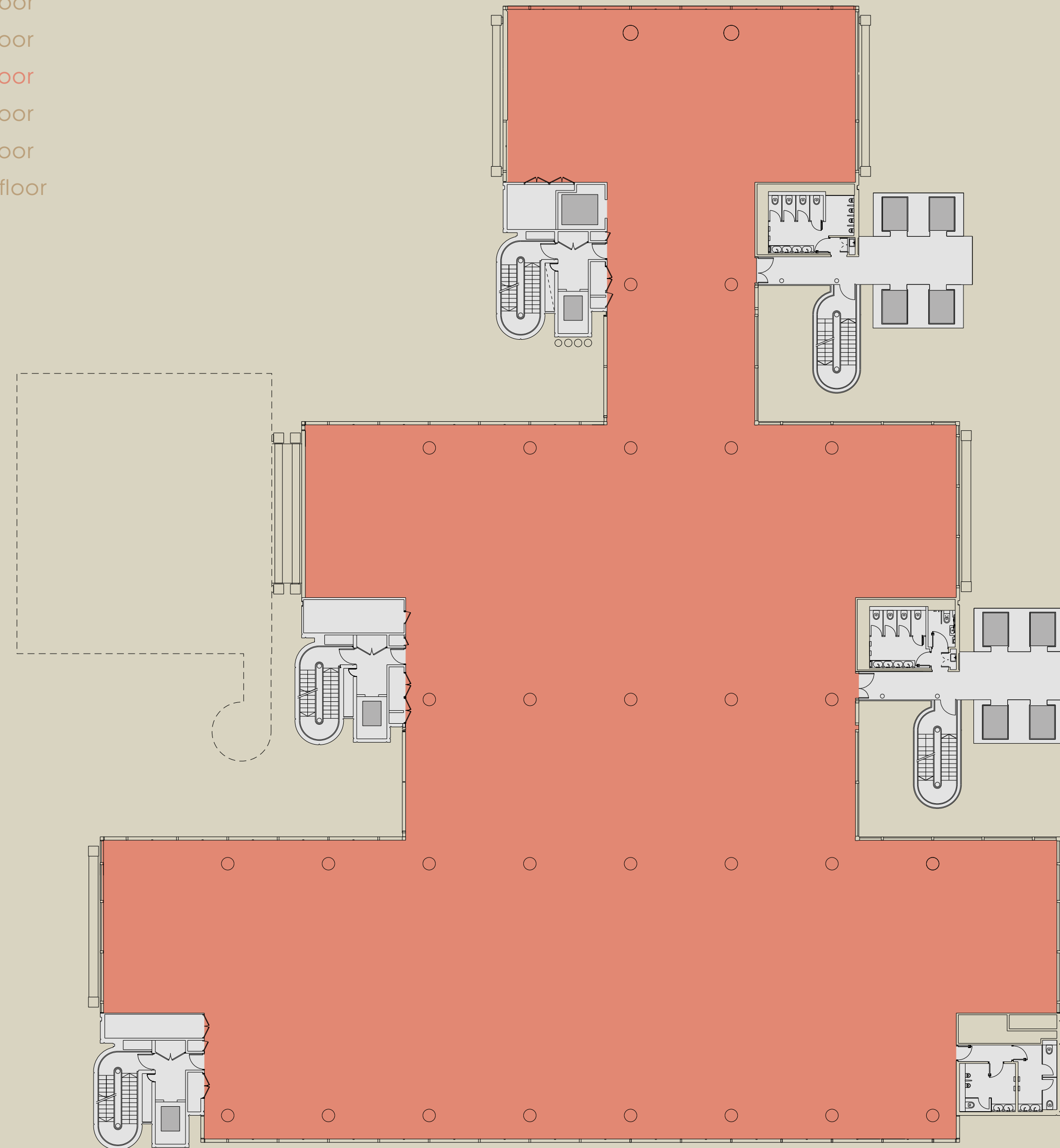
OVERVIEW

WORK SPACE

- Specification
- Schedule of areas
- Floor plans
- Indicative visuals
- Space plans
- Gallery

LOCATION

- Connections
- Hot-Spots
- Amenities
- Green Space
- In Good Company
- Gallery



5TH FLOOR

21,900 SQ FT
2,034.6 SQ M

KEY
Office
Core



OVERVIEW

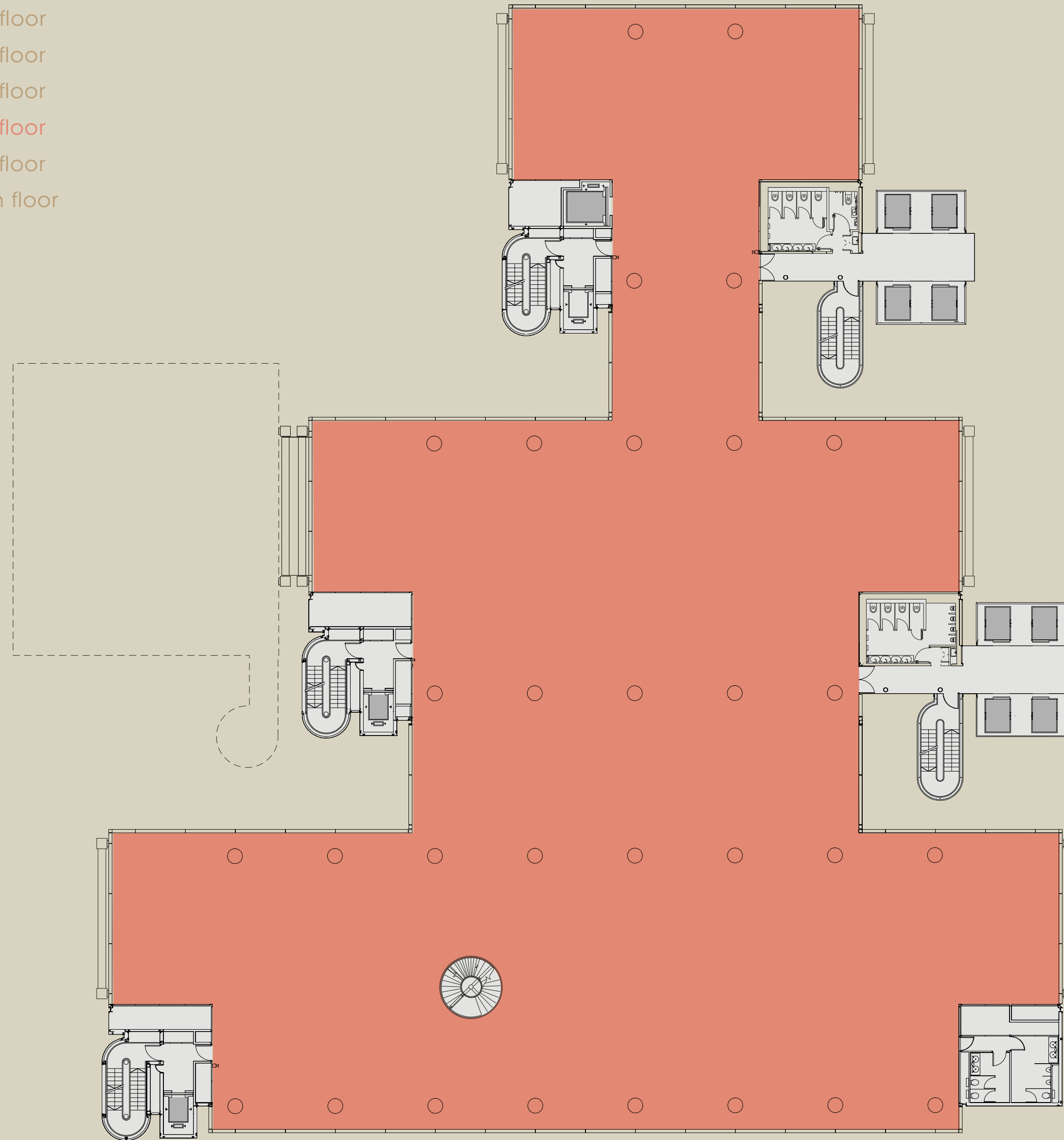
WORK SPACE

- Specification
- Schedule of areas
- Floor plans
- Indicative visuals
- Space plans
- Gallery

LOCATION

- Connections
- Hot-Spots
- Amenities
- Green Space
- In Good Company
- Gallery

- Ground
- 1st floor
- 2nd floor
- 3rd floor
- 4th floor
- 5th floor
- 6th floor
- 7th floor
- 15th floor



6TH FLOOR

21,928 SQ FT
2,037.2 SQ M

KEY

- Office
- Core



OVERVIEW

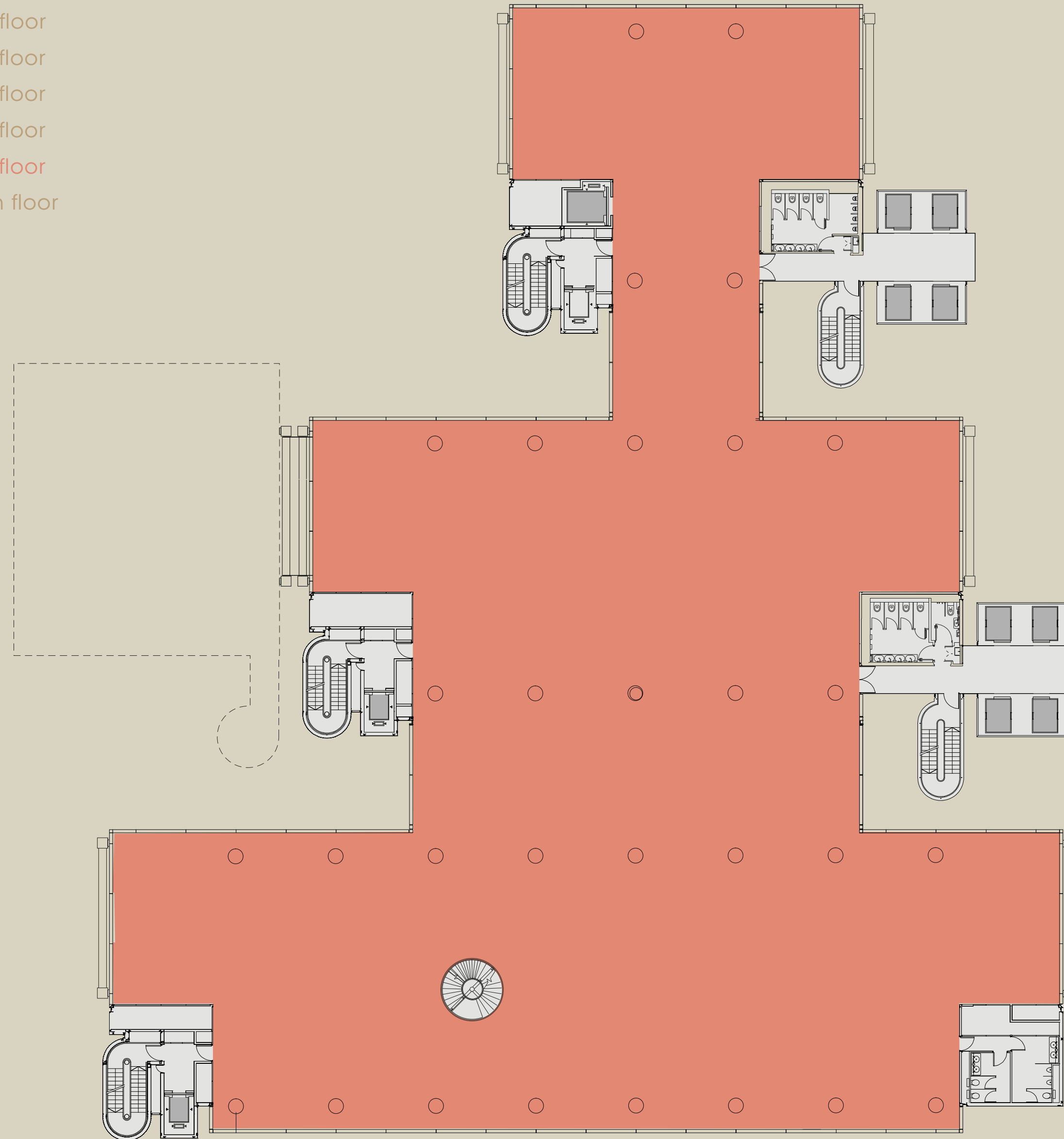
WORK SPACE

- Specification
- Schedule of areas
- Floor plans
- Indicative visuals
- Space plans
- Gallery

LOCATION

- Connections
- Hot-Spots
- Amenities
- Green Space
- In Good Company
- Gallery

- Ground
- 1st floor
- 2nd floor
- 3rd floor
- 4th floor
- 5th floor
- 6th floor
- 7th floor
- 15th floor



7TH FLOOR

21,944 SQ FT
2,038.7 SQ M

KEY

- Office
- Core



- Ground
- 1st floor
- 2nd floor
- 3rd floor
- 4th floor
- 5th floor
- 6th floor
- 7th floor
- 15th floor

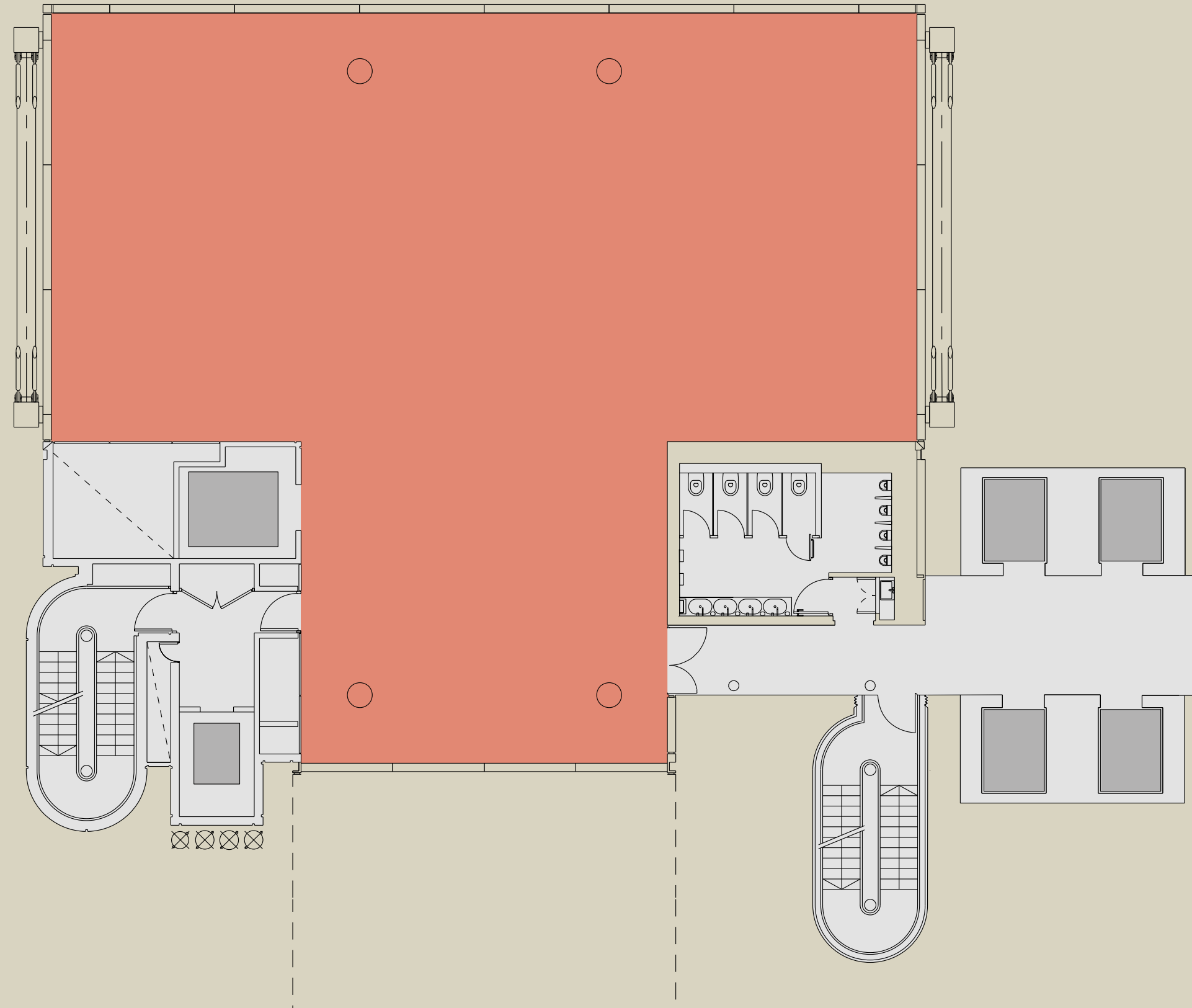
OVERVIEW

WORK SPACE

- Specification
- Schedule of areas
- Floor plans
- Indicative visuals
- Space plans
- Gallery

LOCATION

- Connections
- Hot-Spots
- Amenities
- Green Space
- In Good Company
- Gallery



15TH FLOOR

2,997 SQ FT
278.4 SQ M

KEY

- Office
- Core



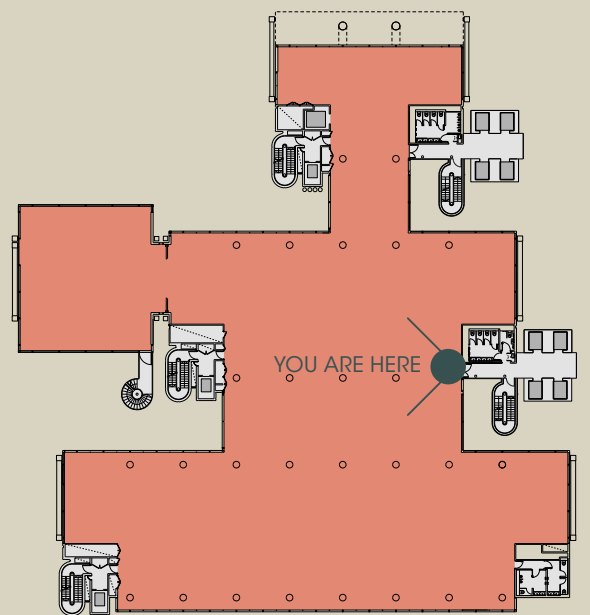
OVERVIEW

WORK SPACE

- Specification
- Schedule of areas
- Floor plans
- Indicative visuals
- Space plans
- Gallery

LOCATION

- Connections
- Hot-Spots
- Amenities
- Green Space
- In Good Company
- Gallery



CGI image of 3rd floor reception



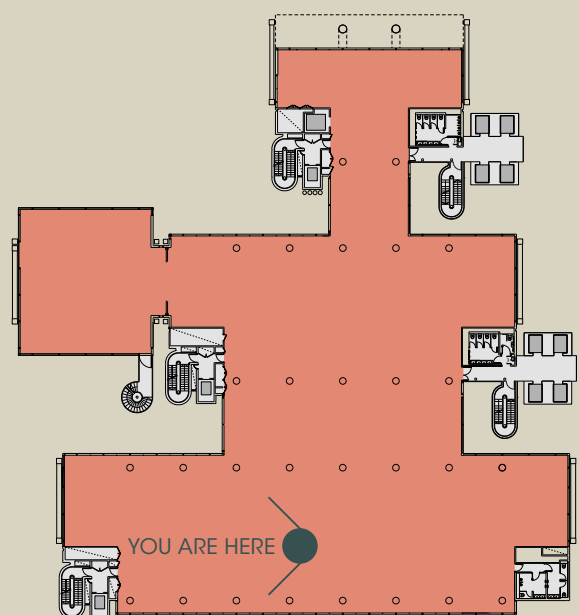
OVERVIEW

WORK SPACE

- Specification
- Schedule of areas
- Floor plans
- Indicative visuals
- Space plans
- Gallery

LOCATION

- Connections
- Hot-Spots
- Amenities
- Green Space
- In Good Company
- Gallery



CGI image of 3rd floor office space



3rd floor
 - FINANCIAL
 - TMT
 - UK/US LEGAL

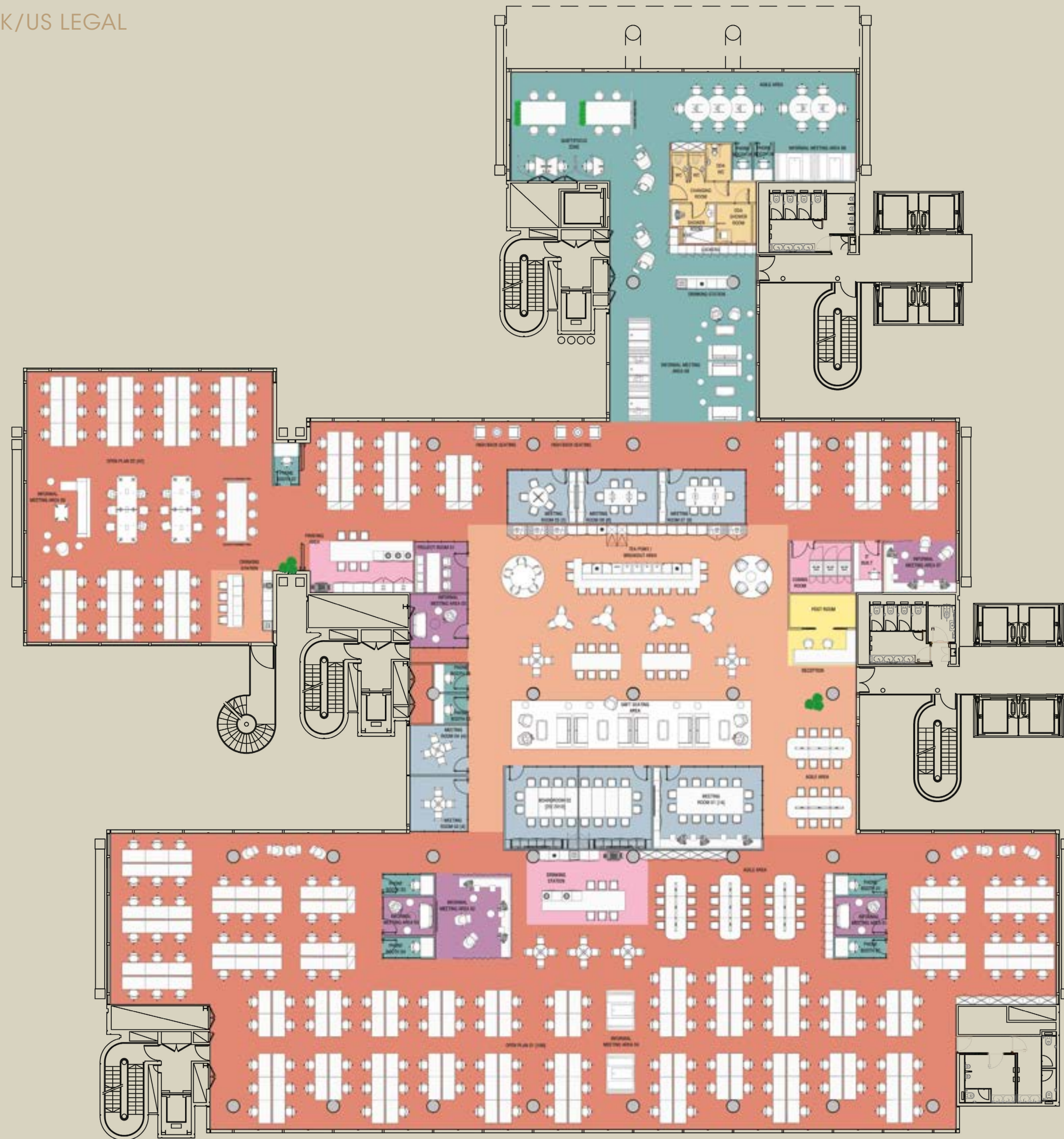
OVERVIEW

WORK SPACE

- Specification
- Schedule of areas
- Floor plans
- Indicative visuals
- Space plans
- Gallery

LOCATION

- Connections
- Hot-Spots
- Amenities
- Green Space
- In Good Company
- Gallery



3RD FLOOR FINANCIAL

23,911 SQ FT (2,221.4 SQ M)

Total workstations: 242

Occupancy density: 1:9

Office area:

Open plan assigned desks 242

Agile work points 64

Meeting rooms: 7

Boardroom 20prs with moving wall 1

Meeting rooms 14prs 1

Meeting room 8prs 1

Meeting room 6prs 1

Meeting room 5prs 1

Meeting room 4prs 2

KEY

- Open Plan Area
- Informal meeting area/Touch down area
- Meeting room
- Tea point/ Breakout area/Client lounge area
- Reception
- Facilities
- Quiet Area
- Additional toilet / Changing room



3rd floor
 - FINANCIAL
 - TMT
 - UK/US LEGAL

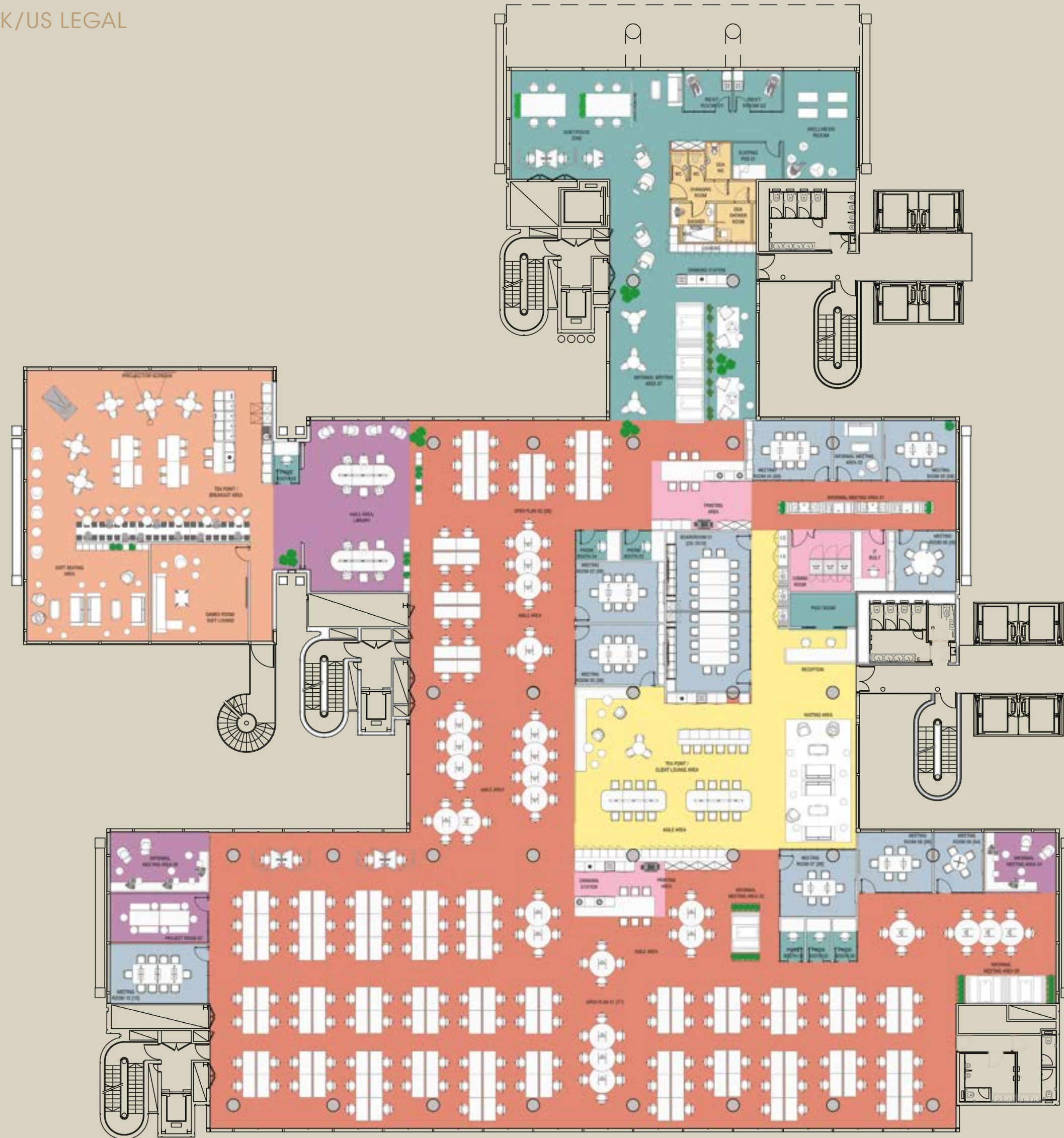
OVERVIEW

WORK SPACE

- Specification
- Schedule of areas
- Floor plans
- Indicative visuals
- Space plans
- Gallery

LOCATION

- Connections
- Hot-Spots
- Amenities
- Green Space
- In Good Company
- Gallery



3RD FLOOR

TMT

23,911 SQ FT (2,221.4 SQ M)

Total workstations: 185

Occupancy density: 1:12

Office area:

Open plan assigned desks 105

Agile work points 80

Meeting rooms: 10

Boardroom 20 prs with moving wall 1

Meeting rooms 10prs 1

Meeting room 8prs 3

Meeting room 6prs 4

Meeting room 4prs 1

KEY

- Open Plan Area
- Informal meeting area/Touch down area
- Meeting room
- Tea point/ Breakout area/Client lounge area
- Reception
- Facilities
- Quiet Area
- Additional toilet / Changing room



3rd floor
 - FINANCIAL
 - TMT
 - UK/US LEGAL

OVERVIEW

WORK SPACE

- Specification
- Schedule of areas
- Floor plans
- Indicative visuals
- Space plans
- Gallery

LOCATION

- Connections
- Hot-Spots
- Amenities
- Green Space
- In Good Company
- Gallery



3RD FLOOR

US/UK LEGAL

23,911 SQ FT (2,221.4 SQ M)

Total workstations: 123
 Occupancy density: 1:18

Office area:

1 prs Executive office 22
 2 prs Office 19
 3 prs Offices 2
 Open plan assigned desks 44
 Agile work points 13

Meeting rooms:

Boardroom 20prs with moving wall 1
 Meeting rooms 12 prs 1
 Meeting rooms 10prs 2
 Meeting room 8prs 1
 Meeting room 6prs 2
 Meeting room 4prs 5

KEY

- Open Plan Area
- Informal meeting area/Touch down area
- Meeting room
- Tea point/ Breakout area/Client lounge area
- Private Office
- Reception
- Facilities
- Quiet Area
- Additional toilet / Changing room



OVERVIEW

WORK SPACE

- Specification
- Schedule of areas
- Floor plans
- Indicative visuals
- Space plans
- Gallery

LOCATION

- Connections
- Hot-Spots
- Amenities
- Green Space
- In Good Company
- Gallery



5TH FLOOR

UK HYBRID/LEGAL

21,900 SQ FT (2,034.6 SQ M)

Total workstations: 220

Occupancy density: 1:9.25

Office area:

1 prs Private office 11

Meeting rooms: 10

Meeting rooms 12 prs 1

Meeting room 8prs 1

Meeting room 6prs 5

Meeting room 4prs 10

Meeting room 3prs 4

KEY

- Open Plan Area
- Meeting room
- Tea point/ Breakout area/Client lounge area
- Private Office
- Reception
- Utility/Comms Area
- Quiet Area



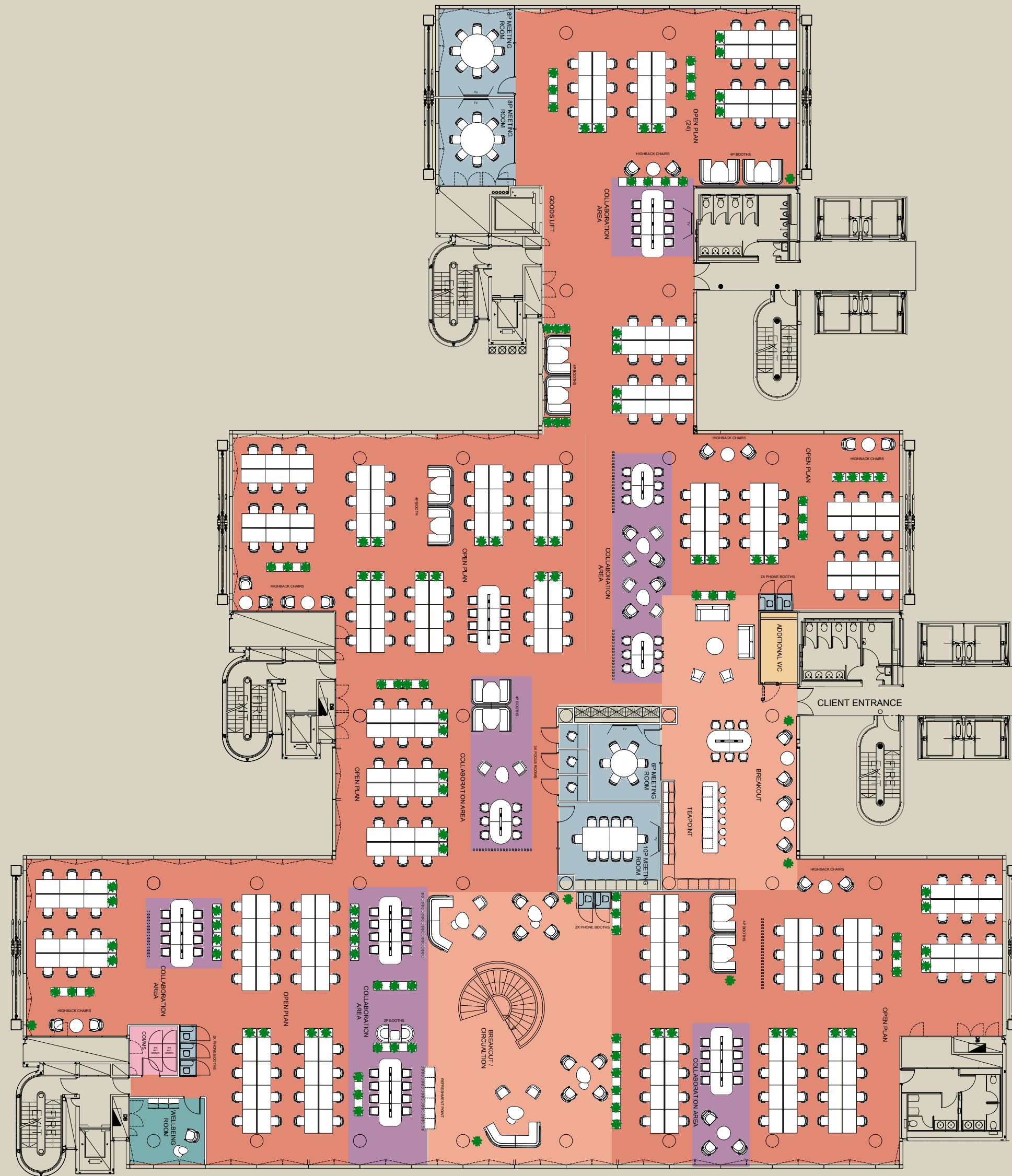
OVERVIEW

WORK SPACE

- Specification
- Schedule of areas
- Floor plans
- Indicative visuals
- Space plans
- Gallery

LOCATION

- Connections
- Hot-Spots
- Amenities
- Green Space
- In Good Company
- Gallery



7TH FLOOR

OPEN PLAN

21,944 SQ FT (2,038.7 SQ M)

Total workstations: 226

Occupancy density: 1:9

Meeting rooms: 10

Meeting rooms 10prs 1

Meeting room 8prs 2

Meeting room 6prs 1

Focus room 1prs 3

KEY

- Open Plan Area
- Informal meeting area/Touch down area
- Meeting room
- Tea point/ Breakout area/Client lounge area
- Utility/Comms Area
- Quiet Area
- Additional toilet / Changing room



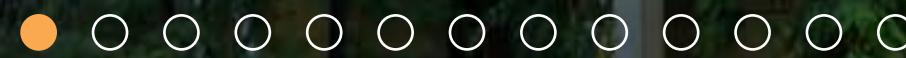
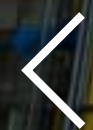
OVERVIEW

WORK SPACE

- Specification
- Schedule of areas
- Floor plans
- Indicative visuals
- Space plans
- Gallery

LOCATION

- Connections
- Hot-Spots
- Amenities
- Green Space
- In Good Company
- Gallery





OVERVIEW

WORK SPACE

- Specification
- Schedule of areas
- Floor plans
- Indicative visuals
- Space plans
- Gallery

LOCATION

- Connections
- Hot-Spots
- Amenities
- Green Space
- In Good Company
- Gallery





OVERVIEW

WORK SPACE

- Specification
- Schedule of areas
- Floor plans
- Indicative visuals
- Space plans
- Gallery

LOCATION

- Connections
- Hot-Spots
- Amenities
- Green Space
- In Good Company
- Gallery





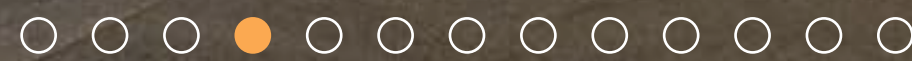
OVERVIEW

WORK SPACE

- Specification
- Schedule of areas
- Floor plans
- Indicative visuals
- Space plans
- Gallery

LOCATION

- Connections
- Hot-Spots
- Amenities
- Green Space
- In Good Company
- Gallery





OVERVIEW

WORK SPACE

- Specification
- Schedule of areas
- Floor plans
- Indicative visuals
- Space plans
- Gallery

LOCATION

- Connections
- Hot-Spots
- Amenities
- Green Space
- In Good Company
- Gallery





OVERVIEW

WORK SPACE

- Specification
- Schedule of areas
- Floor plans
- Indicative visuals
- Space plans
- Gallery

LOCATION

- Connections
- Hot-Spots
- Amenities
- Green Space
- In Good Company
- Gallery





OVERVIEW

WORK SPACE

- Specification
- Schedule of areas
- Floor plans
- Indicative visuals
- Space plans
- Gallery

LOCATION

- Connections
- Hot-Spots
- Amenities
- Green Space
- In Good Company
- Gallery





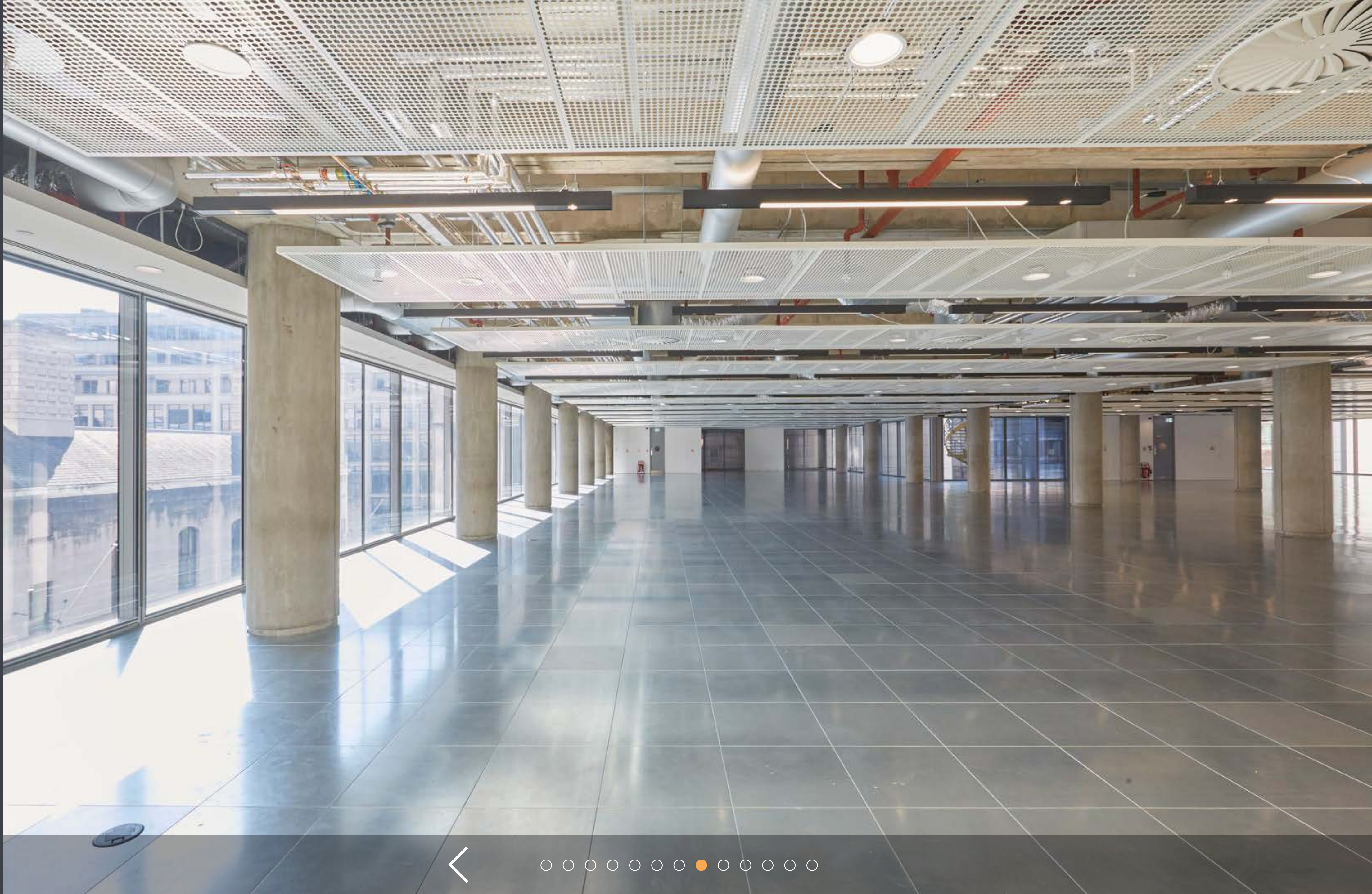
OVERVIEW

WORK SPACE

- Specification
- Schedule of areas
- Floor plans
- Indicative visuals
- Space plans
- Gallery

LOCATION

- Connections
- Hot-Spots
- Amenities
- Green Space
- In Good Company
- Gallery





OVERVIEW

WORK SPACE

- Specification
- Schedule of areas
- Floor plans
- Indicative visuals
- Space plans
- Gallery

LOCATION

- Connections
- Hot-Spots
- Amenities
- Green Space
- In Good Company
- Gallery





OVERVIEW

WORK SPACE

- Specification
- Schedule of areas
- Floor plans
- Indicative visuals
- Space plans
- Gallery

LOCATION

- Connections
- Hot-Spots
- Amenities
- Green Space
- In Good Company
- Gallery





OVERVIEW

WORK SPACE

- Specification
- Schedule of areas
- Floor plans
- Indicative visuals
- Space plans
- Gallery

LOCATION

- Connections
- Hot-Spots
- Amenities
- Green Space
- In Good Company
- Gallery





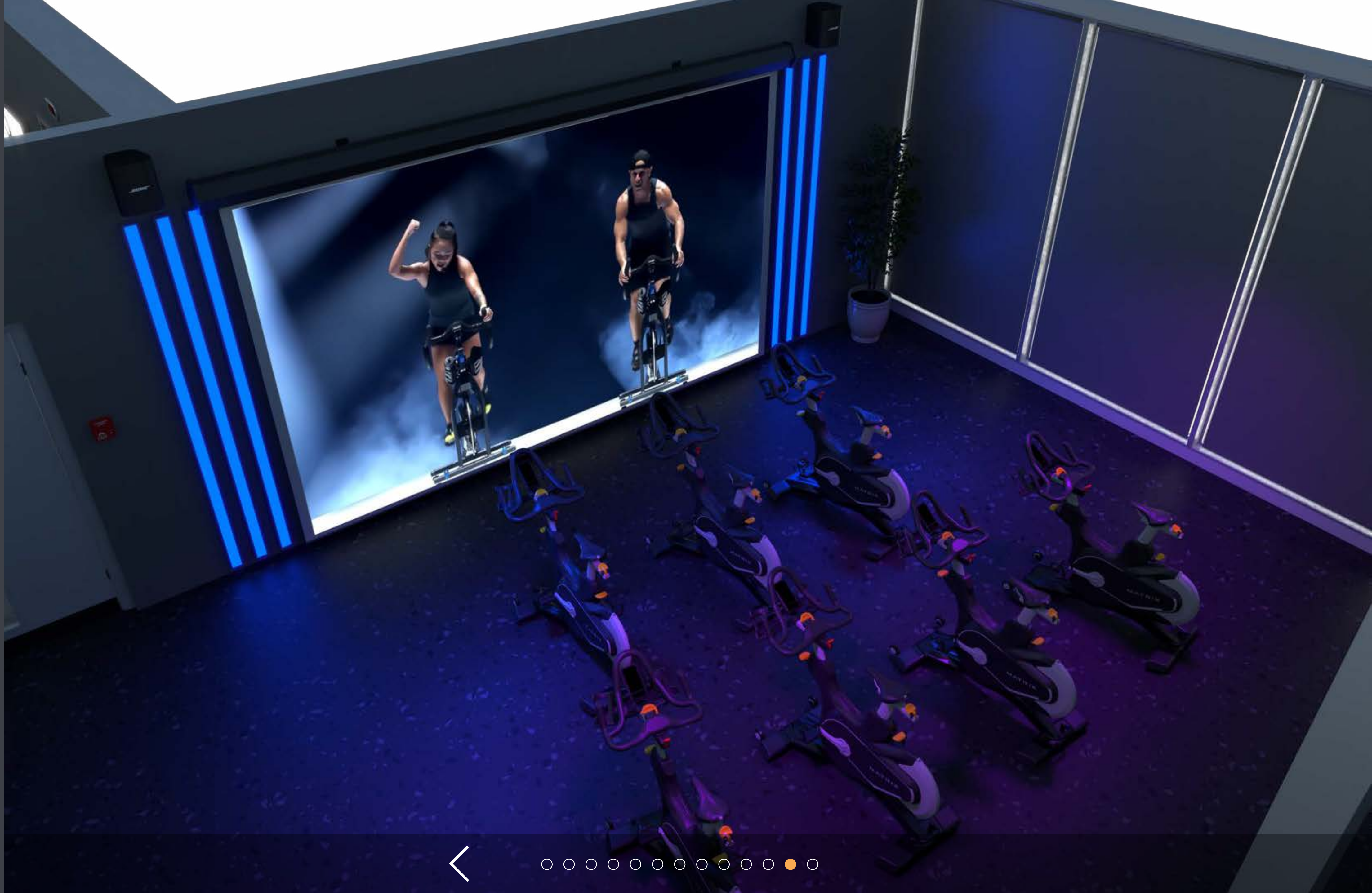
OVERVIEW

WORK SPACE

- Specification
- Schedule of areas
- Floor plans
- Indicative visuals
- Space plans
- Gallery

LOCATION

- Connections
- Hot-Spots
- Amenities
- Green Space
- In Good Company
- Gallery





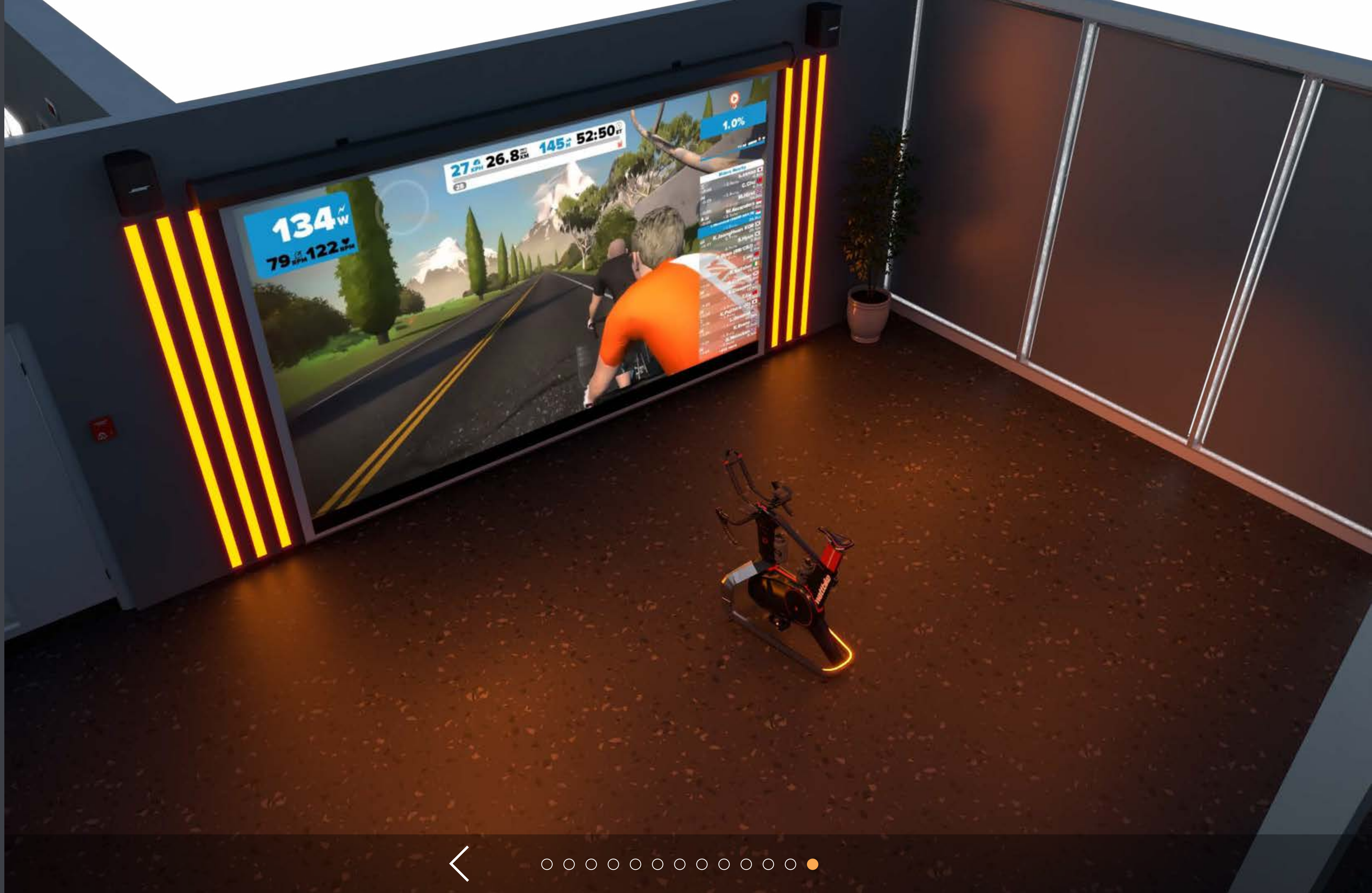
OVERVIEW

WORK SPACE

- Specification
- Schedule of areas
- Floor plans
- Indicative visuals
- Space plans
- Gallery

LOCATION

- Connections
- Hot-Spots
- Amenities
- Green Space
- In Good Company
- Gallery



Everything at 88 Wood Street





CONNECTIONS



FARRINGDON



BARBICAN



▲ OLD STREET



FARRINGDON EAST



LIVERPOOL STREET



MOORGATE

88 Wood Street

OVERVIEW

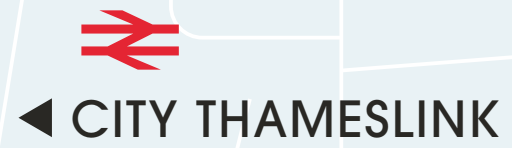
WORK SPACE

- Specification
- Schedule of areas
- Floor plans
- Indicative visuals
- Space plans
- Gallery

LOCATION

Connections

- Hot-Spots
- Amenities
- Green Space
- In Good Company
- Gallery



◀ CITY THAMESLINK



ST PAUL'S



▼ BLACKFRIARS



MANSION HOUSE



▼ CANNON STREET



▼ MONUMENT



ALDGATE ▶



9 mins



6 mins



5 mins



6 mins



8 mins



10 mins





HOT-SPOTS

OVERVIEW

WORK SPACE

- Specification
- Schedule of areas
- Floor plans
- Indicative visuals
- Space plans
- Gallery

LOCATION

- Connections
- Hot-Spots
- Amenities
- Green Space
- In Good Company
- Gallery



BARTS SQUARE



PATERNOSTER SQUARE

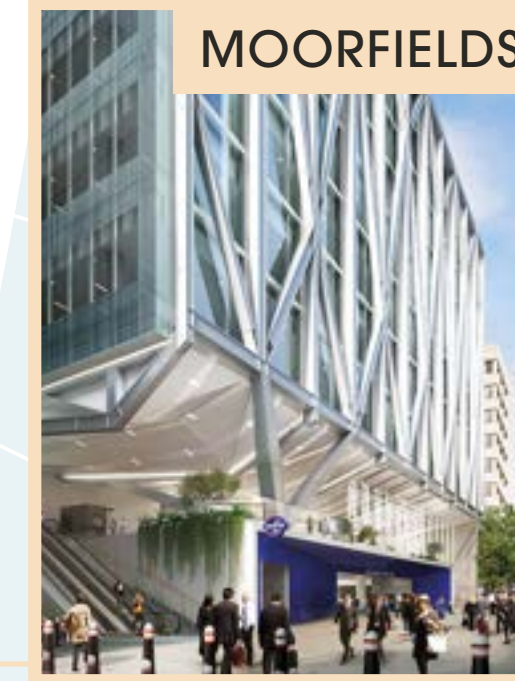


ONE NEW CHANGE

BARBICAN



barbican



MOORFIELDS

LIVERPOOL STREET

MOORGATE

88 Wood Street

GUILDHALL

ST PAUL'S

THE NED
CITY OF LONDON

BANK

MANSION HOUSE

BOW LANE





AMENITIES



barbican cinema



BARBIE GREEN



MANICOMIO CITY



THE IVY ASIA



F1 ARCADE



Ted's Grooming Room



DIGME



DAVY'S



ROSSLYN



HAWKSMOOR

BARBICAN

ST PAUL'S

MOORGATE

LIVERPOOL STREET

88 Wood Street

OVERVIEW

WORK SPACE

- Specification
- Schedule of areas
- Floor plans
- Indicative visuals
- Space plans
- Gallery

LOCATION

- Connections
- Hot-Spots
- Amenities
- Green Space
- In Good Company
- Gallery





GREEN SPACE

OVERVIEW

WORK SPACE

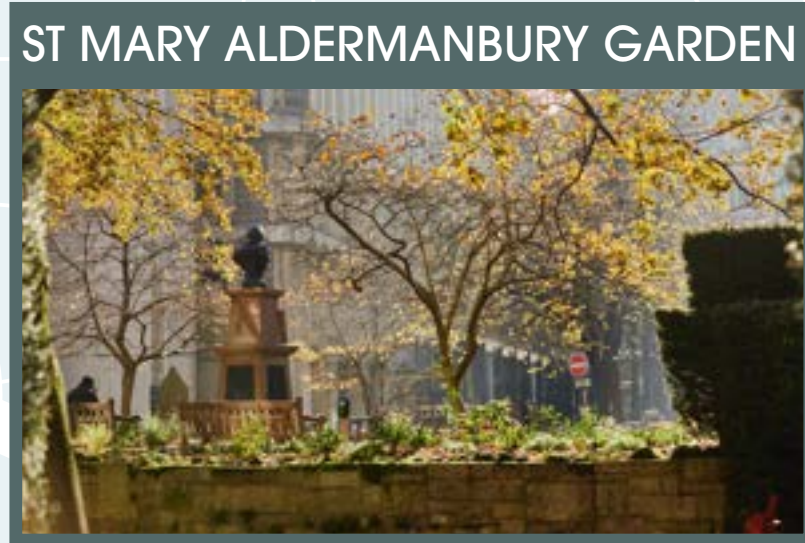
- Specification
- Schedule of areas
- Floor plans
- Indicative visuals
- Space plans
- Gallery

LOCATION

- Connections
- Hot-Spots
- Amenities
- Green Space
- In Good Company
- Gallery



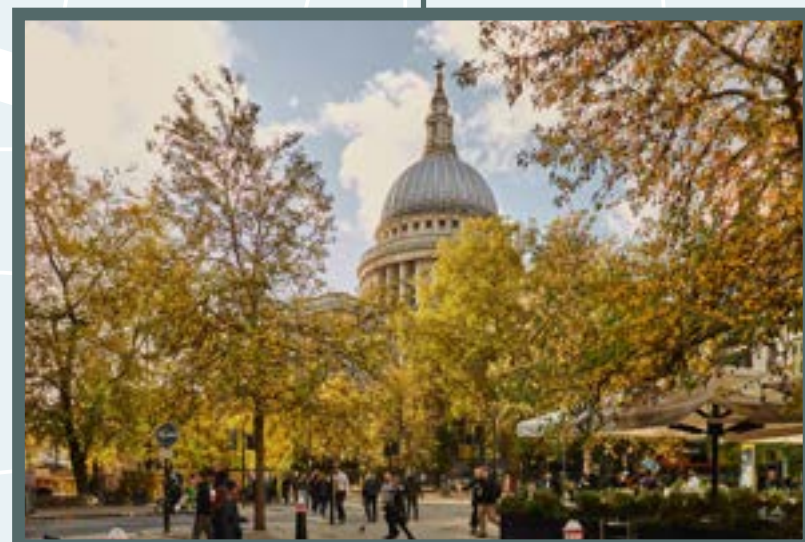
CHARTERHOUSE SQUARE



ST MARY ALDERMANBURY GARDEN



ST PAUL'S FESTIVAL GARDENS



BARBICAN

Aldersgate Street



ST PAUL'S



MANSION HOUSE



SALTERS' GARDEN



MOORGATE



LIVERPOOL STREET

Moorgate

88 Wood Street



FINSBURY CIRCUS GARDENS



COLEMAN STREET GARDENS



BANK

Queen Victoria Street

Threadneedle Street

Ludgate Hill

London Wall

London Wall

Noble Street

Wood Street

Fore Street



IN GOOD COMPANY

BARBICAN

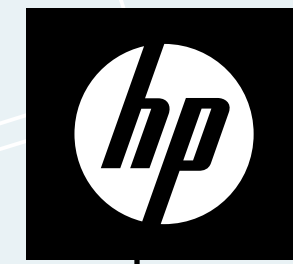
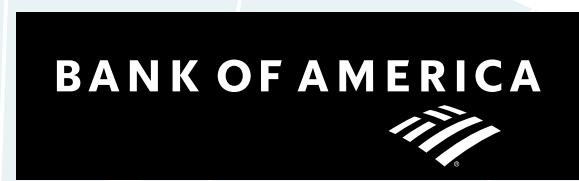
OVERVIEW

WORK SPACE

- Specification
- Schedule of areas
- Floor plans
- Indicative visuals
- Space plans
- Gallery

LOCATION

- Connections
- Hot-Spots
- Amenities
- Green Space
- In Good Company
- Gallery

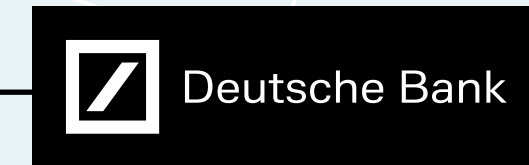
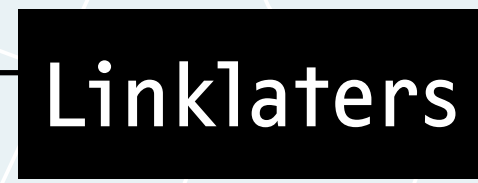


Schroders

CLEARY GOTTLIEB

CLIFFORD CHANCE

88 Wood Street



ST PAUL'S

MANSION HOUSE

BANK

Aldersgate Street

Noble Street

Wood Street

Fare Street

London Wall

Moorgate

London Wall

Gresham Street

Threadneedle Street

Queen Victoria Street

Ludgate Hill



OVERVIEW

WORK SPACE

- Specification
- Schedule of areas
- Floor plans
- Indicative visuals
- Space plans
- Gallery

LOCATION

- Connections
- Hot-Spots
- Amenities
- Green Space
- In Good Company
- Gallery





OVERVIEW

WORK SPACE

- Specification
- Schedule of areas
- Floor plans
- Indicative visuals
- Space plans
- Gallery

LOCATION

- Connections
- Hot-Spots
- Amenities
- Green Space
- In Good Company
- Gallery





OVERVIEW

WORK SPACE

- Specification
- Schedule of areas
- Floor plans
- Indicative visuals
- Space plans
- Gallery

LOCATION

- Connections
- Hot-Spots
- Amenities
- Green Space
- In Good Company
- Gallery





OVERVIEW

WORK SPACE

- Specification
- Schedule of areas
- Floor plans
- Indicative visuals
- Space plans
- Gallery

LOCATION

- Connections
- Hot-Spots
- Amenities
- Green Space
- In Good Company
- Gallery





OVERVIEW

WORK SPACE

- Specification
- Schedule of areas
- Floor plans
- Indicative visuals
- Space plans
- Gallery

LOCATION

- Connections
- Hot-Spots
- Amenities
- Green Space
- In Good Company
- Gallery





OVERVIEW

WORK SPACE

- Specification
- Schedule of areas
- Floor plans
- Indicative visuals
- Space plans
- Gallery

LOCATION

- Connections
- Hot-Spots
- Amenities
- Green Space
- In Good Company
- Gallery





OVERVIEW

WORK SPACE

- Specification
- Schedule of areas
- Floor plans
- Indicative visuals
- Space plans
- Gallery

LOCATION

- Connections
- Hot-Spots
- Amenities
- Green Space
- In Good Company
- Gallery





OVERVIEW

WORK SPACE

- Specification
- Schedule of areas
- Floor plans
- Indicative visuals
- Space plans
- Gallery

LOCATION

- Connections
- Hot-Spots
- Amenities
- Green Space
- In Good Company
- Gallery



CONTACT

Lease

New leases available direct from the Landlord.

Terms

Upon application.

Viewing

Strictly through sole letting agents.



Dan Burn

M +44 7515 607 011
dan.burn@rx.london

Frankie Warner Lacey

M +44 7775 895 661
frankie.warnerlacey@rx.london

Alfie John

M +44 7377 885 814
alfie.john@rx.london



Rory Paton

M +44 7900 245 221
rory.paton@jll.com

Sarah Shell

M +44 7808 290 853
sarah.shell@jll.com

Claire Allen

M +44 7872 107 543
claire.allen@jll.com



88woodstreet.com

DISCLAIMER: The Agents for themselves and for the vendors or lessors of the property whose agents they are give notice that, (i) these particulars are given without responsibility of The Agents or the Vendors or Lessors as a general outline only, for the guidance of prospective purchasers or tenants, and do not constitute the whole or any part of an offer or contract; (ii) The Agents cannot guarantee the accuracy of any description, dimension, references to condition, necessary permissions for use and occupation and other details contained herein and any prospective purchasers or tenants should not rely on them as statements or representations of fact but must satisfy themselves by inspection or otherwise as to the accuracy of each of them; (iii) no employee of The Agents have any authority to make or give any representation or enter into any contract whatsoever in relation to the property; (iv) VAT may be payable on the purchase price and / or rent, all figures are exclusive of VAT, intending purchasers or lessees must satisfy themselves as to the applicable VAT position, if necessary by taking appropriate professional advice; (v) The Joint Agents will not be liable, in negligence or otherwise, for any loss arising from the use of these particulars. August 2024.

Designed and produced by Graphicks | 020 3435 6952 | www.graphicks.co.uk