

An icon
with a
new beat

88
Wood
Street.

88 Wood Street.

OVERVIEW

WORK SPACE

- Specification
- Schedule of areas
- Floor plans
- Indicative visuals
- Space plans
- Gallery

LOCATION

- Connections
- Hot-Spots
- Amenities
- Green Space
- In Good Company
- Gallery



OVERVIEW

Welcome to 88 Wood Street, designed by Richard Rogers Stirk Harbour + Partners and re-imagined by award-winning architects Morrow + Lorraine.

- Best in class, amenity rich work space.
- Brilliantly located within the City of London in close proximity to major transport hubs.
- Light and efficient floorplates.
- Newly remodeled and refurbished reception and end of trip facilities.

88 Wood Street.

OVERVIEW

WORK SPACE

- Specification
- Schedule of areas
- Floor plans
- Indicative visuals
- Space plans
- Gallery

LOCATION

- Connections
- Hot-Spots
- Amenities
- Green Space
- In Good Company
- Gallery



WORK SPACE

Sir Richard Rogers' signature style is instantly recognisable at 88 Wood Street, a modern classic refurbished for a new generation of business. Updates to the existing architecture only serve to complement and enhance the original form and function of this infinitely iconic building.

Warm reception

A welcoming light-filled reception thoughtfully refurbished for quiet contemplation and a flexible approach to work.

Space to breathe

A high-ceilinged space that includes a living feature wall.

End of trip

Increased bike storage with new shower, changing and locker facilities for those who prefer the freedom of two wheels.

SPECIFICATION

OVERVIEW

WORK SPACE

Specification

Schedule of areas

Floor plans

Indicative visuals

Space plans

Gallery

LOCATION

Connections

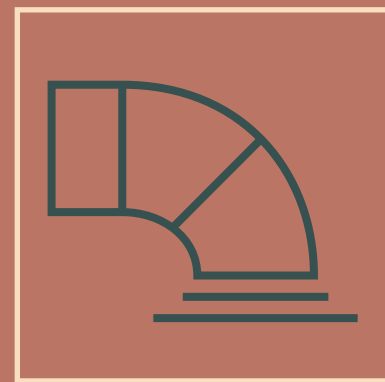
Hot-Spots

Amenities

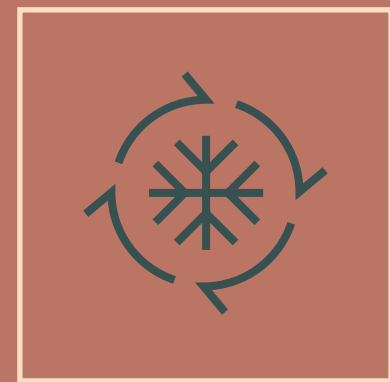
Green Space

In Good Company

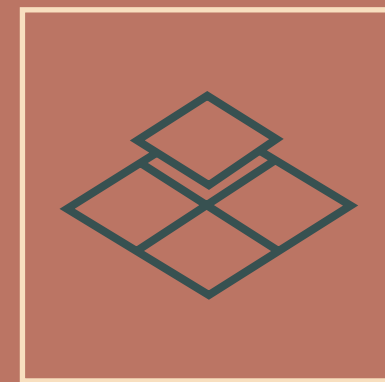
Gallery



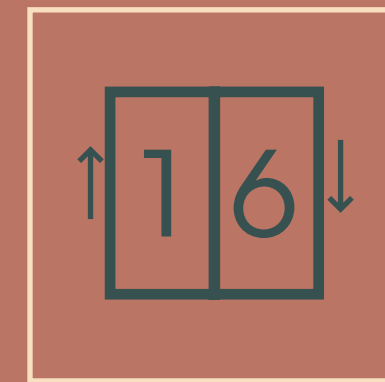
Fresh air delivered
at 16 l/s/person



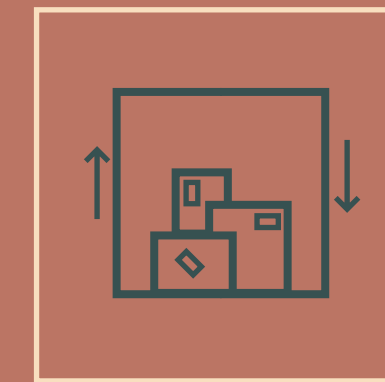
New 4-pipe fan coil
air conditioning



Raised access flooring
with 150mm void



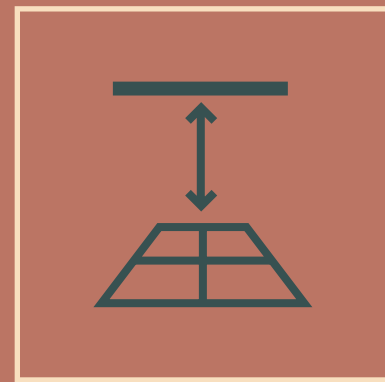
8 x 16 person
glass wall-climber
passenger lifts



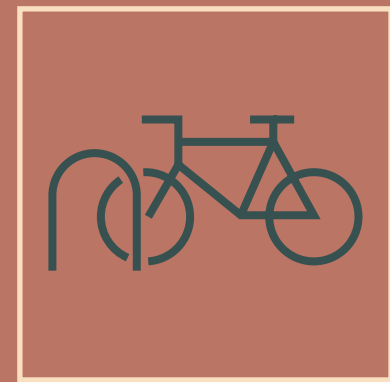
1 x 2,000kg
goods lift



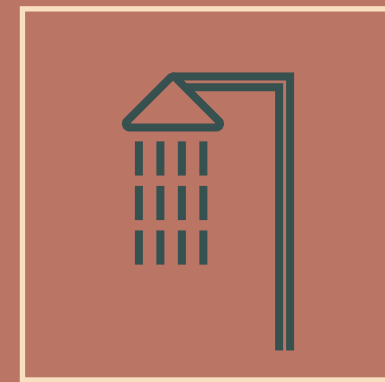
83 sq m living
wall in reception



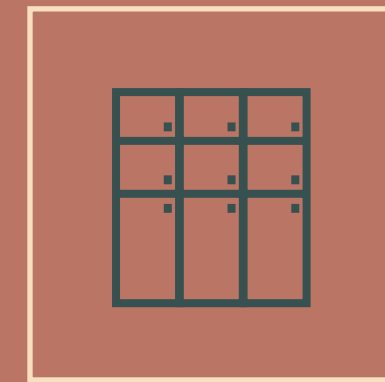
Floor to raff 2.7m
(3.0m on 1st to 3rd)
Floor to slab 3.3m
(3.6m on 1st to 3rd)



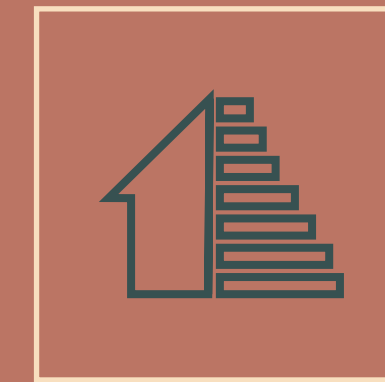
233 cycle racks
(includes 202 double
stacked, 5 accessible
& 26 folding spaces)



24 showers plus
one accessible



233 lockers and six
airing cupboards



Pathway identified
towards EPC B



Communal
business lounge
and cafe

SCHEDULE OF AREAS

OVERVIEW

WORK SPACE

Specification

Schedule of areas

Floor plans

Indicative visuals

Space plans

Gallery

LOCATION

Connections

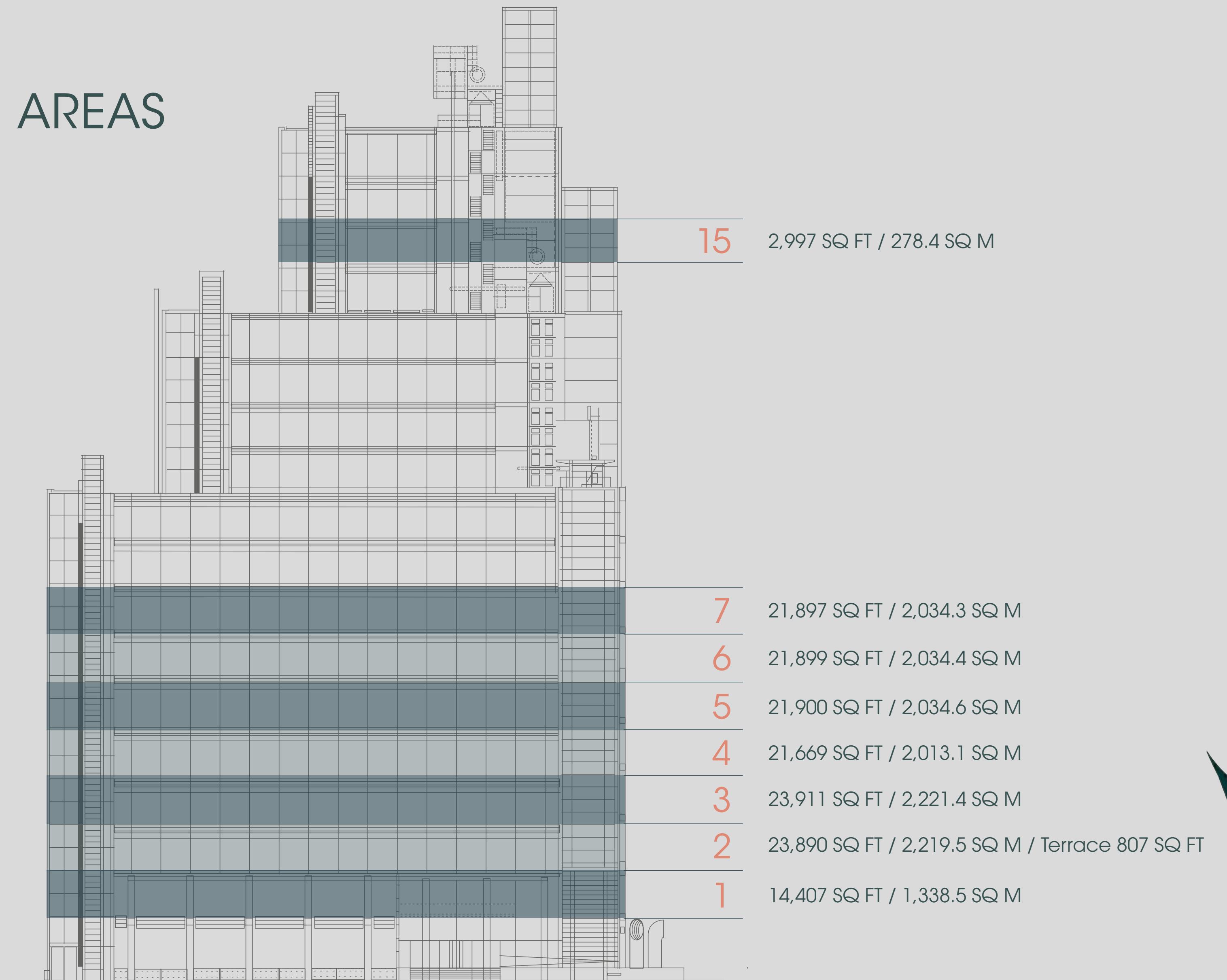
Hot-Spots

Amenities

Green Space

In Good Company

Gallery



TOTAL AVAILABLE AREA 152,570 SQ FT / 14,1714.2 SQ M

88 Wood Street.

OVERVIEW

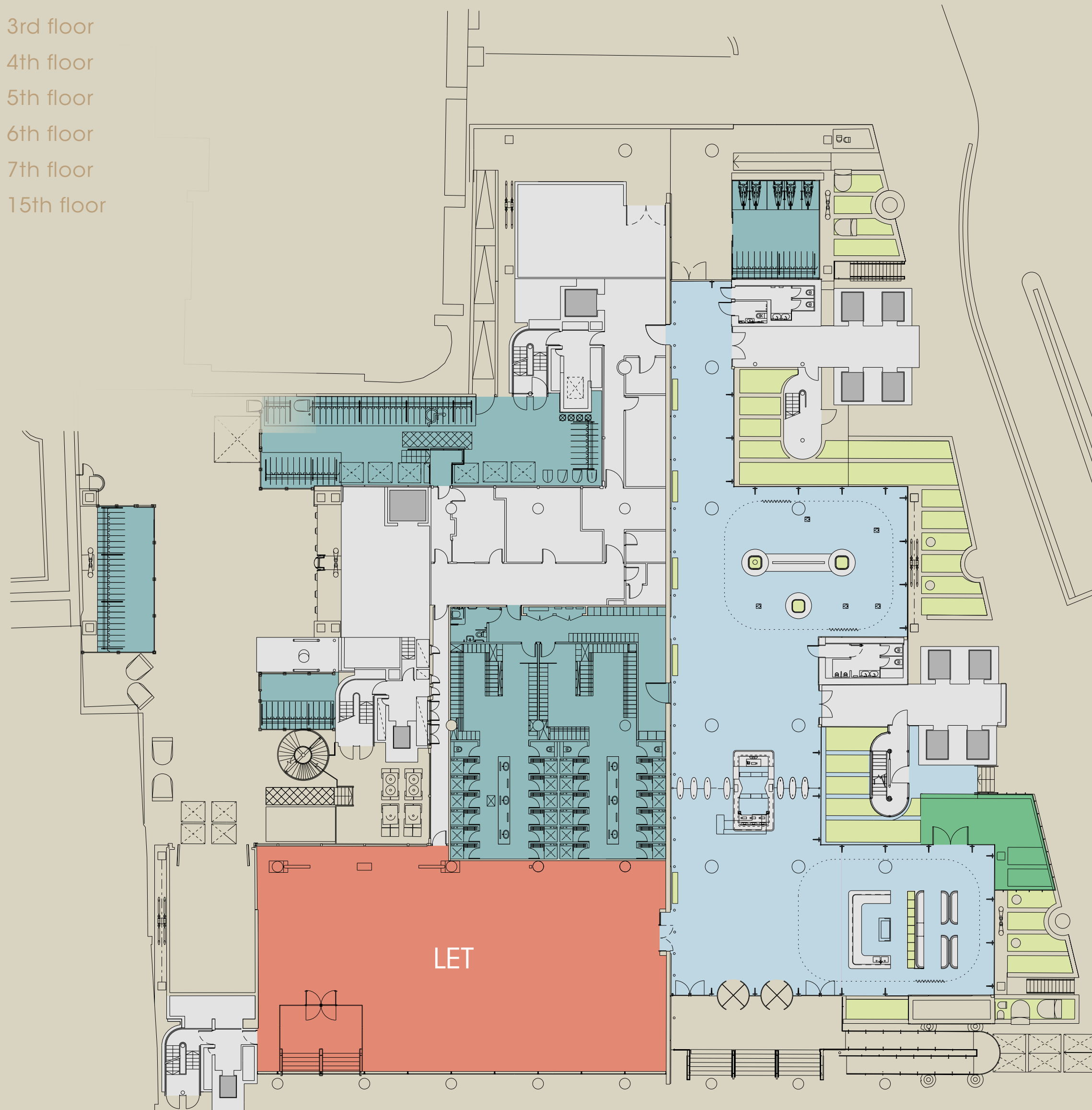
WORK SPACE

- Specification
- Schedule of areas
- Floor plans
- Indicative visuals
- Space plans
- Gallery

LOCATION

- Connections
- Hot-Spots
- Amenities
- Green Space
- In Good Company
- Gallery

- Ground
- 1st floor
- 2nd floor
- 3rd floor
- 4th floor
- 5th floor
- 6th floor
- 7th floor
- 15th floor



GROUND FLOOR

233 CYCLE RACKS (INCLUDES 202 DOUBLE STACKED, 5 ACCESSIBLE & 26 FOLDING SPACES)

233 LOCKERS AND 6 AIRING CUPBOARDS

24 SHOWERS PLUS ONE ACCESSIBLE

KEY

- Office
- Core
- Reception
- End of trip
- Landscaping
- Terrace

88 Wood Street.

OVERVIEW

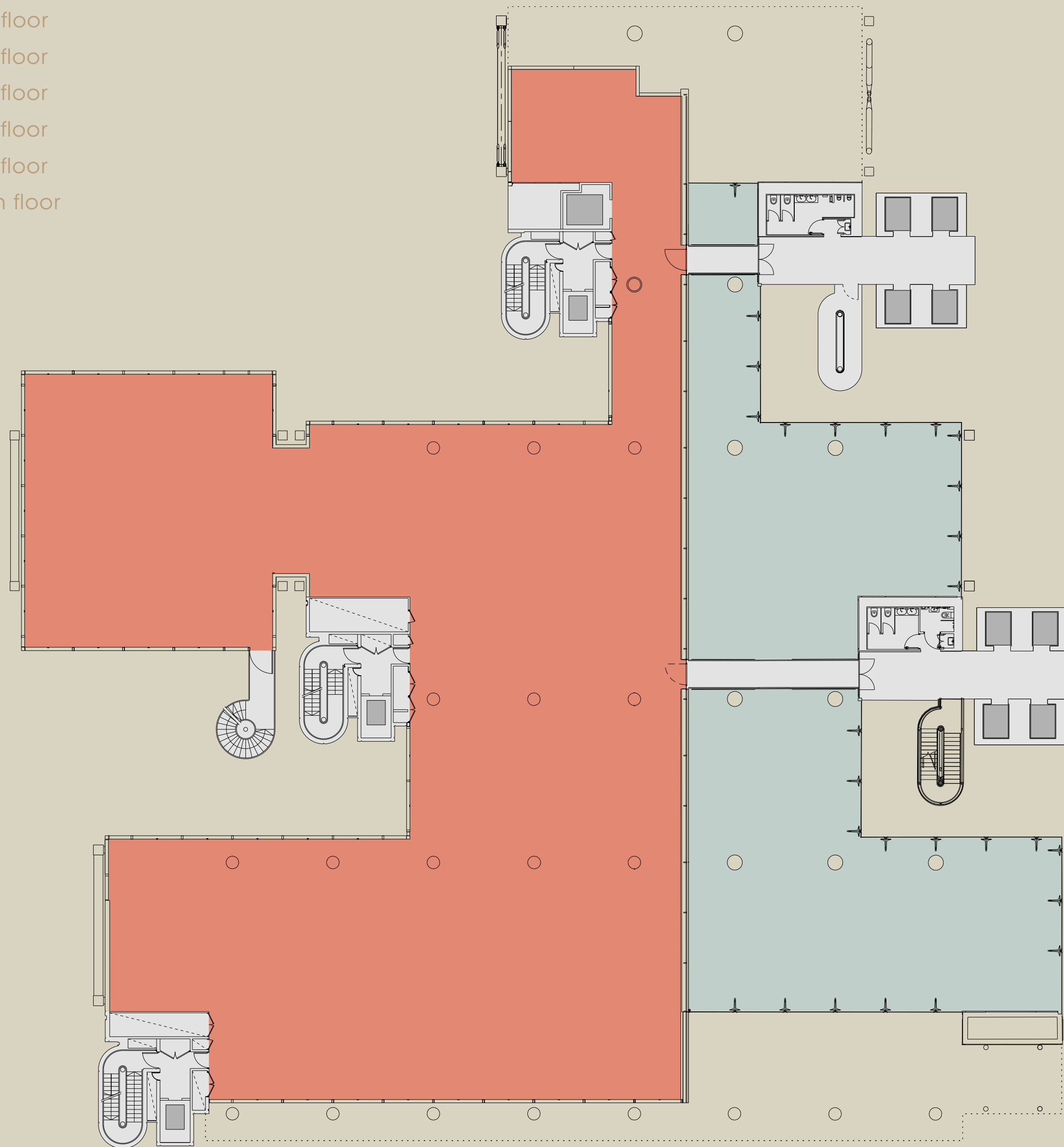
WORK SPACE

- Specification
- Schedule of areas
- Floor plans
- Indicative visuals
- Space plans
- Gallery

LOCATION

- Connections
- Hot-Spots
- Amenities
- Green Space
- In Good Company
- Gallery

- Ground
- 1st floor
- 2nd floor
- 3rd floor
- 4th floor
- 5th floor
- 6th floor
- 7th floor
- 15th floor



1ST FLOOR

14,407 SQ FT
1,338.5 SQ M

- KEY
- Office
 - Core
 - Double-height Reception

88 Wood Street.

OVERVIEW

WORK SPACE

- Specification
- Schedule of areas
- Floor plans
- Indicative visuals
- Space plans
- Gallery

LOCATION

- Connections
- Hot-Spots
- Amenities
- Green Space
- In Good Company
- Gallery

- Ground
- 1st floor
- 2nd floor
- 3rd floor
- 4th floor
- 5th floor
- 6th floor
- 7th floor
- 15th floor



2ND FLOOR

23,890 SQ FT
2,219.5 SQ M
Terrace 807 SQ FT

- KEY
- Office
 - Core
 - Terrace

88 Wood Street.

OVERVIEW

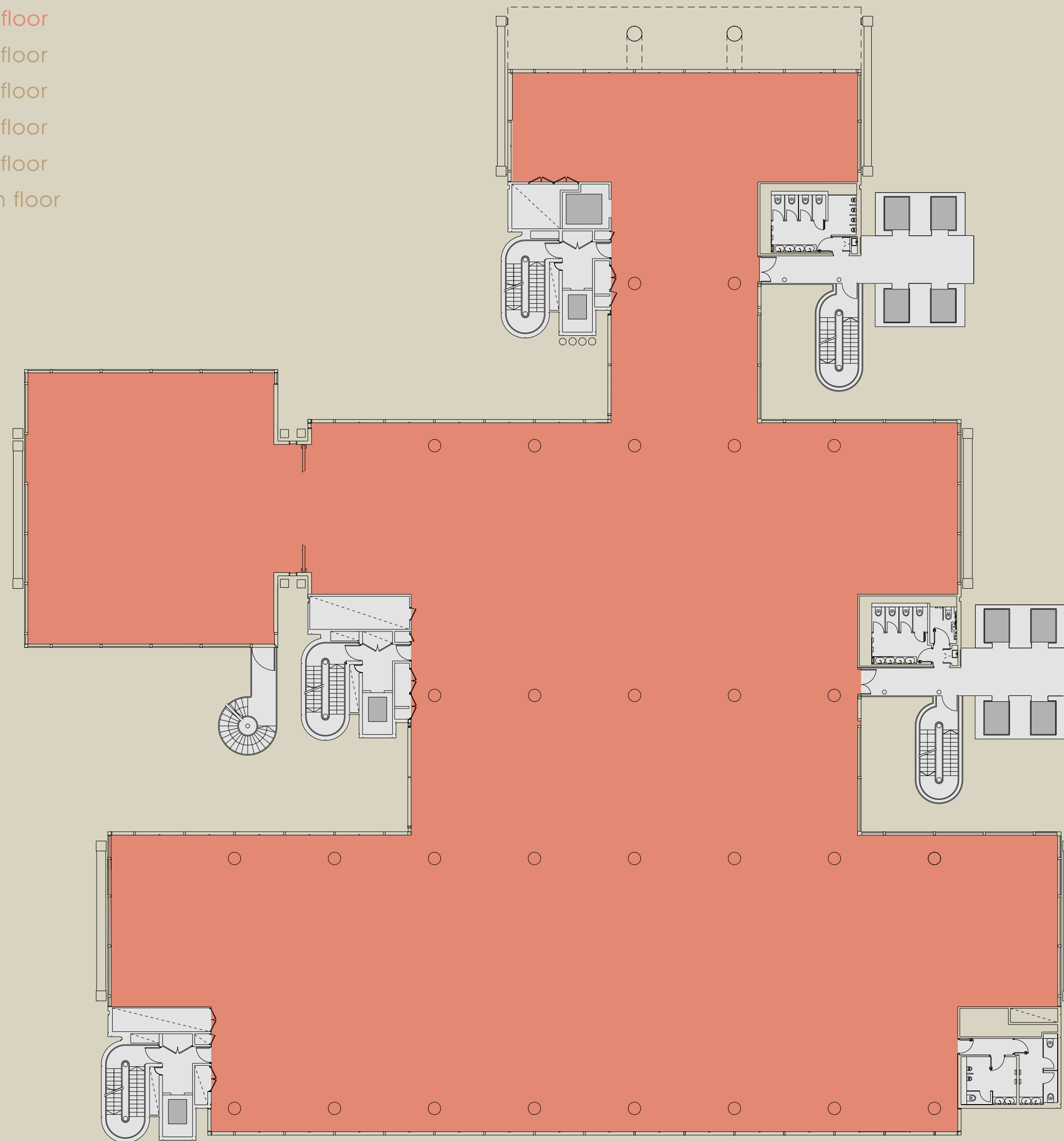
WORK SPACE

- Specification
- Schedule of areas
- Floor plans
- Indicative visuals
- Space plans
- Gallery

LOCATION

- Connections
- Hot-Spots
- Amenities
- Green Space
- In Good Company
- Gallery

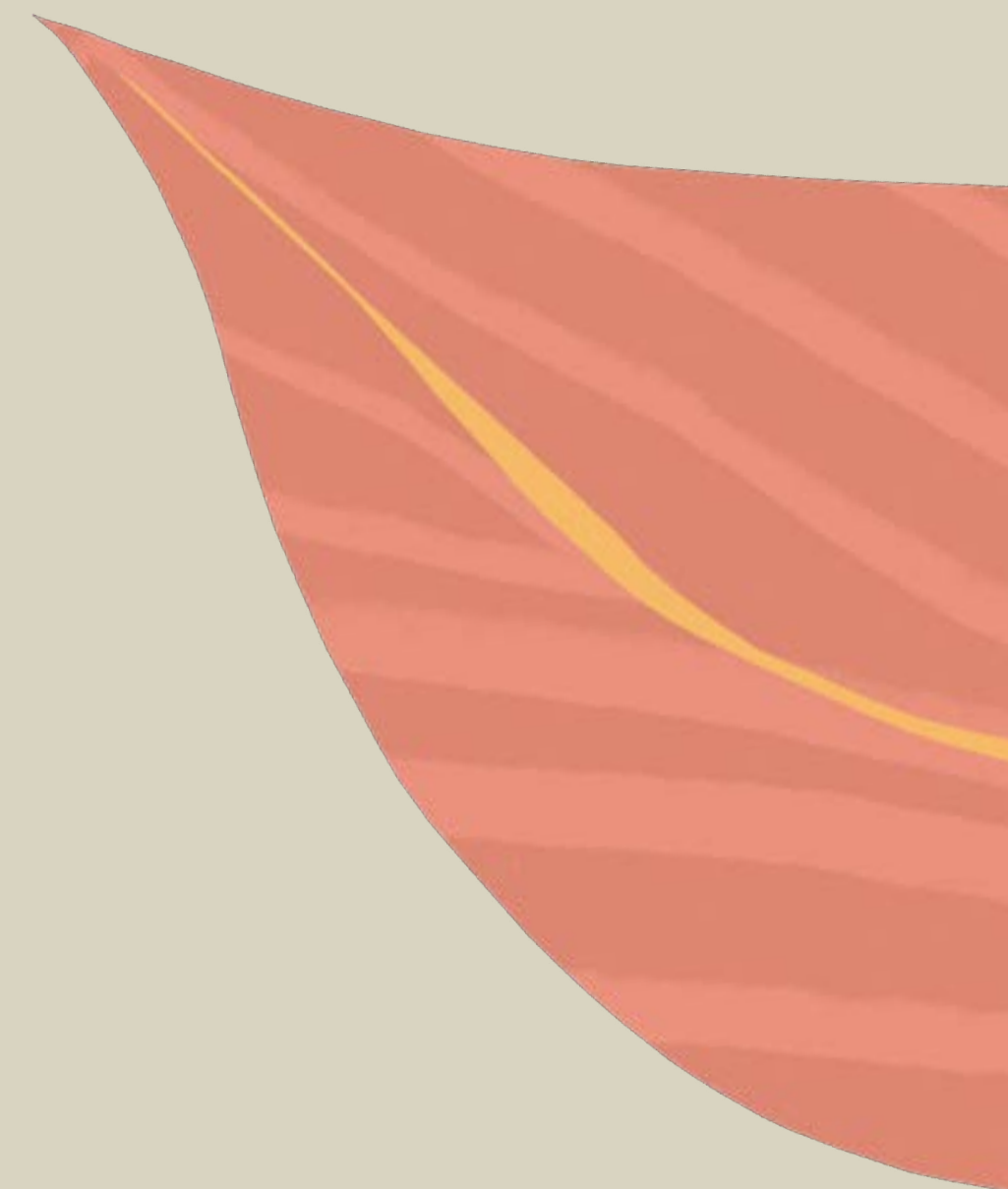
- Ground
- 1st floor
- 2nd floor
- 3rd floor
- 4th floor
- 5th floor
- 6th floor
- 7th floor
- 15th floor



3RD FLOOR

23,911 SQ FT
2,221.4 SQ M

KEY
Office
Core



88 Wood Street.

OVERVIEW

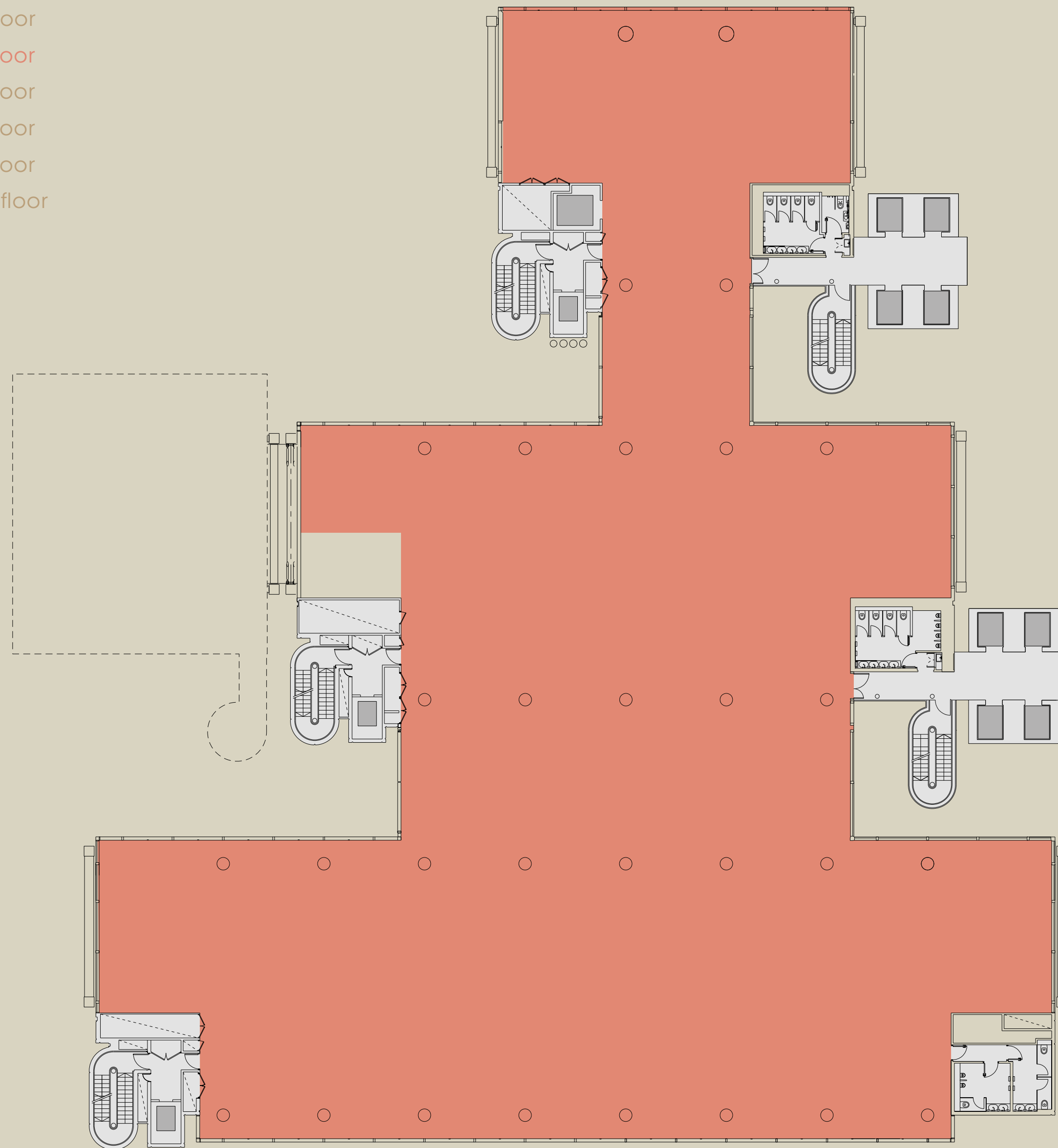
WORK SPACE

- Specification
- Schedule of areas
- Floor plans
- Indicative visuals
- Space plans
- Gallery

LOCATION

- Connections
- Hot-Spots
- Amenities
- Green Space
- In Good Company
- Gallery

- Ground
- 1st floor
- 2nd floor
- 3rd floor
- 4th floor
- 5th floor
- 6th floor
- 7th floor
- 15th floor



4TH FLOOR

21,669 SQ FT
2,013.1 SQ M

KEY

- Office
- Core

88 Wood Street.

OVERVIEW

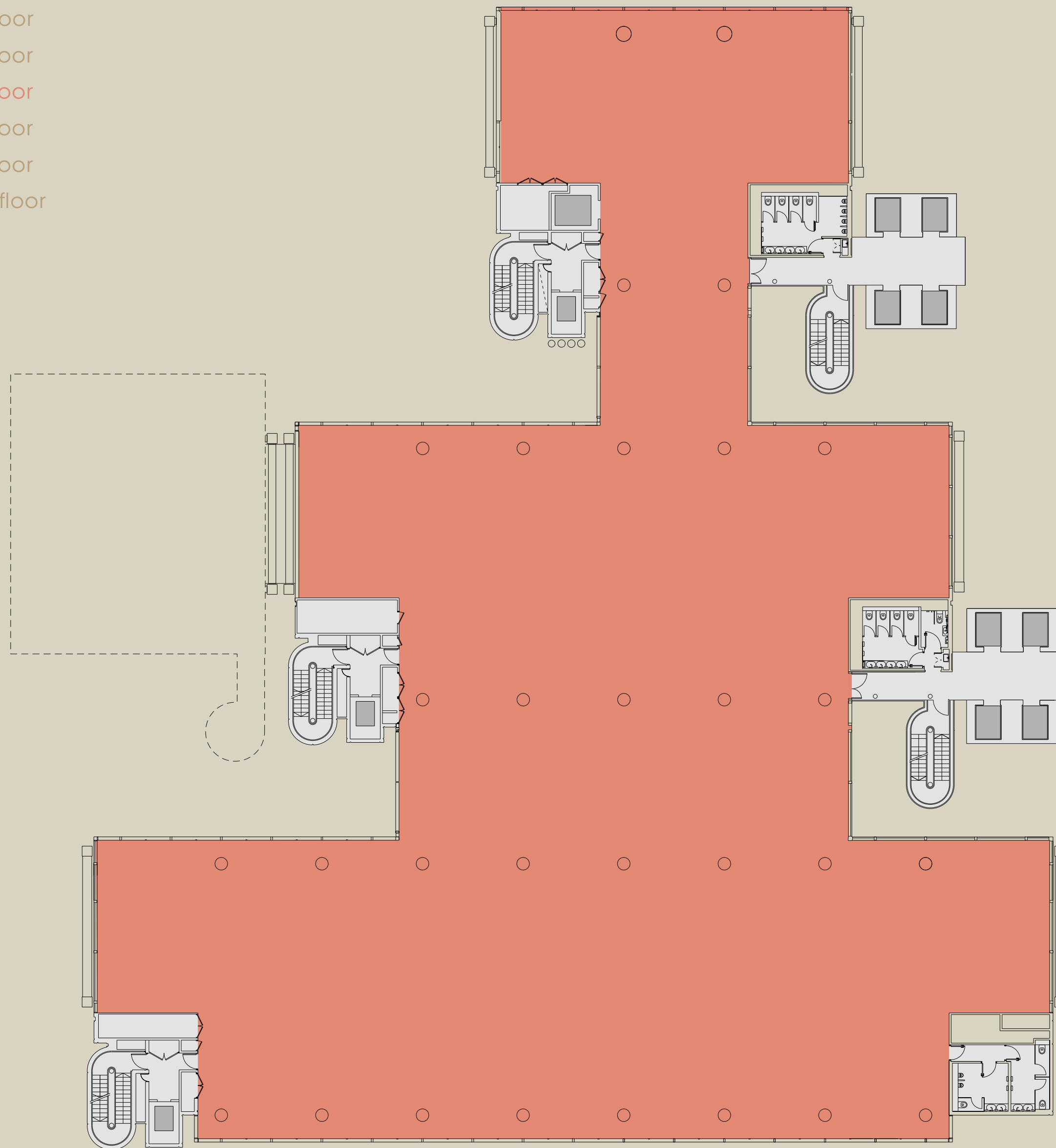
WORK SPACE

- Specification
- Schedule of areas
- Floor plans
- Indicative visuals
- Space plans
- Gallery

LOCATION

- Connections
- Hot-Spots
- Amenities
- Green Space
- In Good Company
- Gallery

- Ground
- 1st floor
- 2nd floor
- 3rd floor
- 4th floor
- 5th floor
- 6th floor
- 7th floor
- 15th floor



5TH FLOOR

21,900 SQ FT
2,034.6 SQ M

KEY

- Office
- Core

88 Wood Street.

OVERVIEW

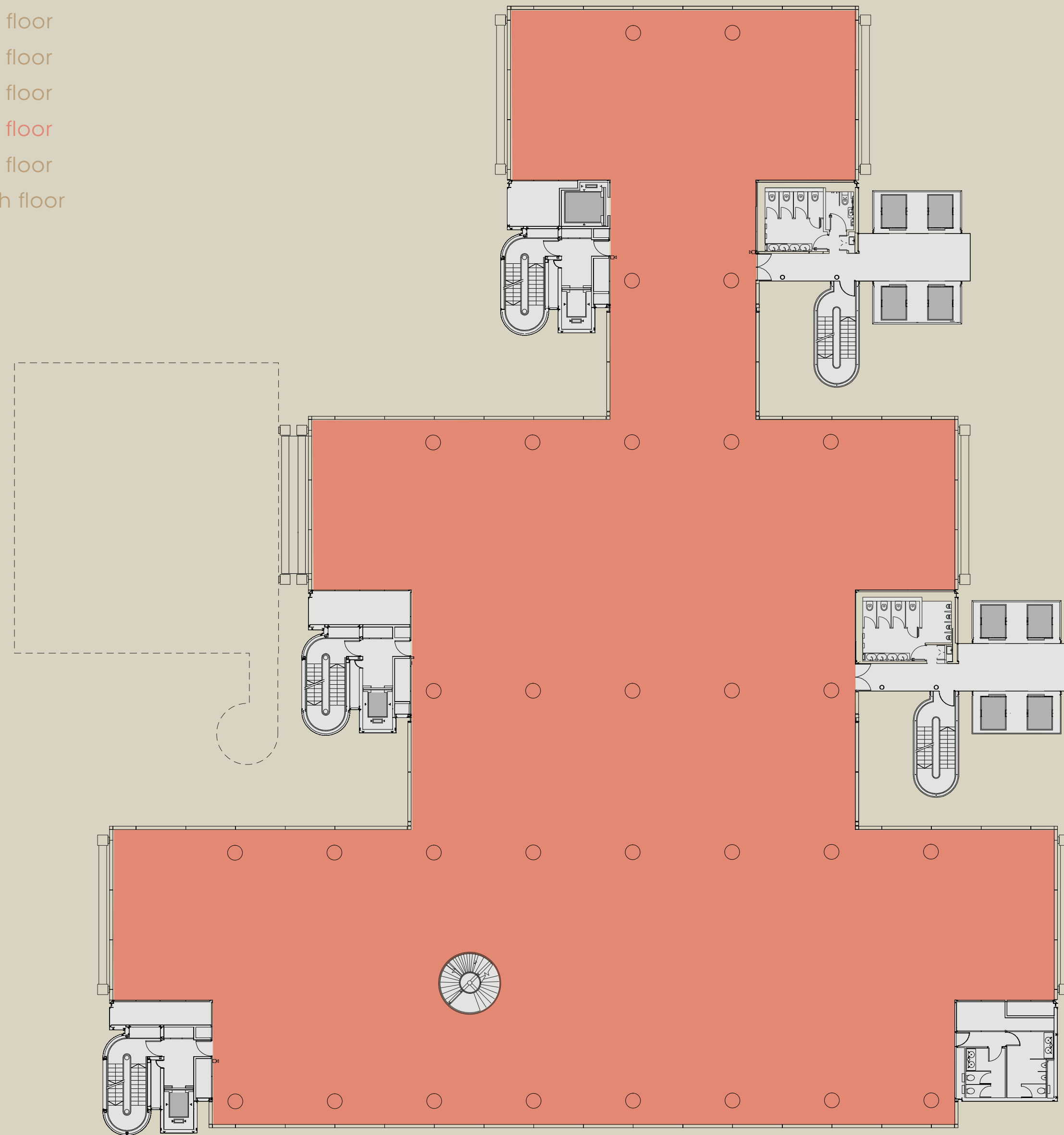
WORK SPACE

- Specification
- Schedule of areas
- Floor plans
- Indicative visuals
- Space plans
- Gallery

LOCATION

- Connections
- Hot-Spots
- Amenities
- Green Space
- In Good Company
- Gallery

- Ground
- 1st floor
- 2nd floor
- 3rd floor
- 4th floor
- 5th floor
- 6th floor
- 7th floor
- 15th floor



6TH FLOOR

21,899 SQ FT
2,034.4 SQ M

KEY

- Office
- Core

88 Wood Street.

OVERVIEW

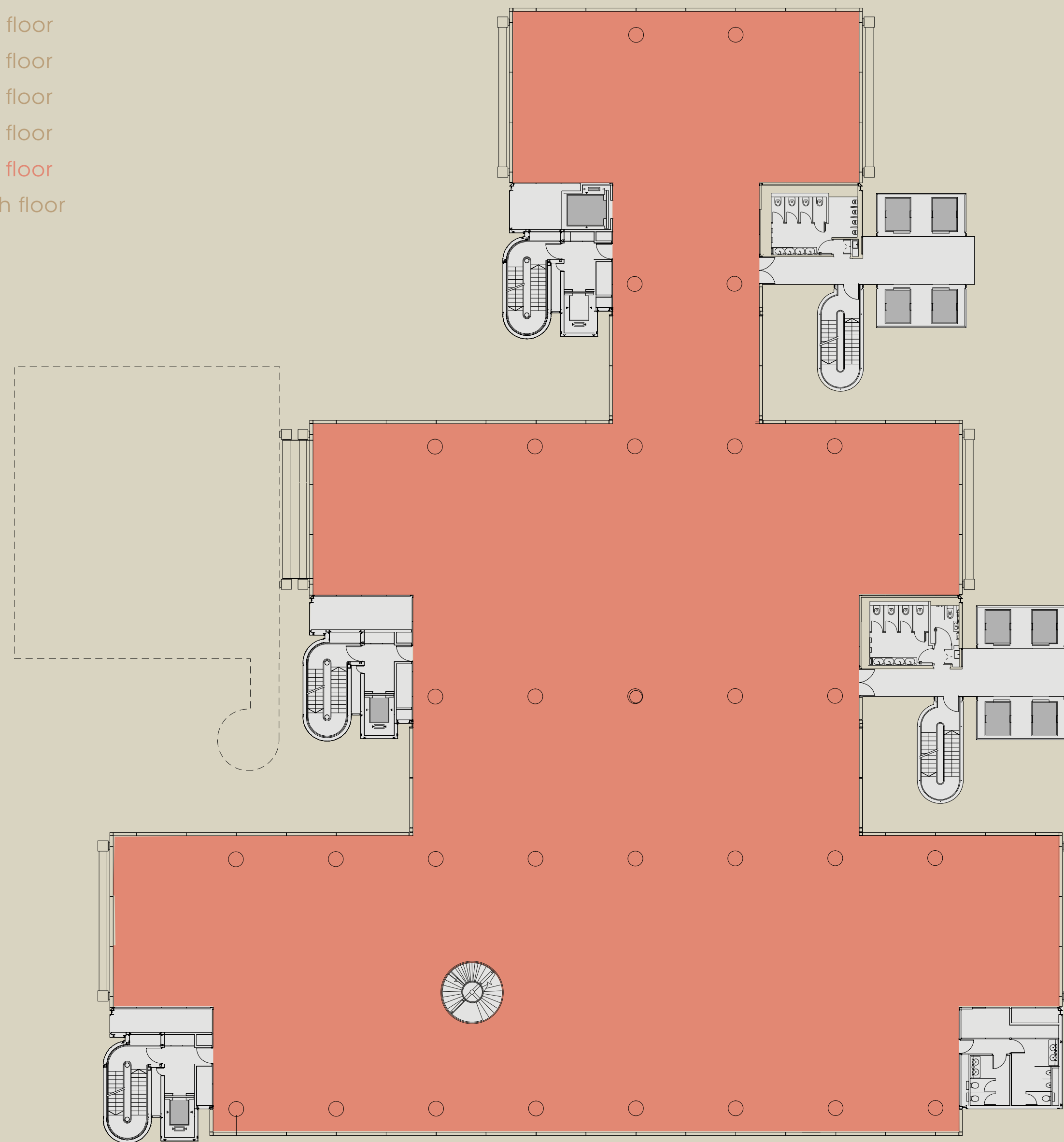
WORK SPACE

- Specification
- Schedule of areas
- Floor plans
- Indicative visuals
- Space plans
- Gallery

LOCATION

- Connections
- Hot-Spots
- Amenities
- Green Space
- In Good Company
- Gallery

- Ground
- 1st floor
- 2nd floor
- 3rd floor
- 4th floor
- 5th floor
- 6th floor
- 7th floor
- 15th floor



7TH FLOOR

21,897 SQ FT
2,034.3 SQ M

KEY

- Office
- Core

88 Wood Street.

OVERVIEW

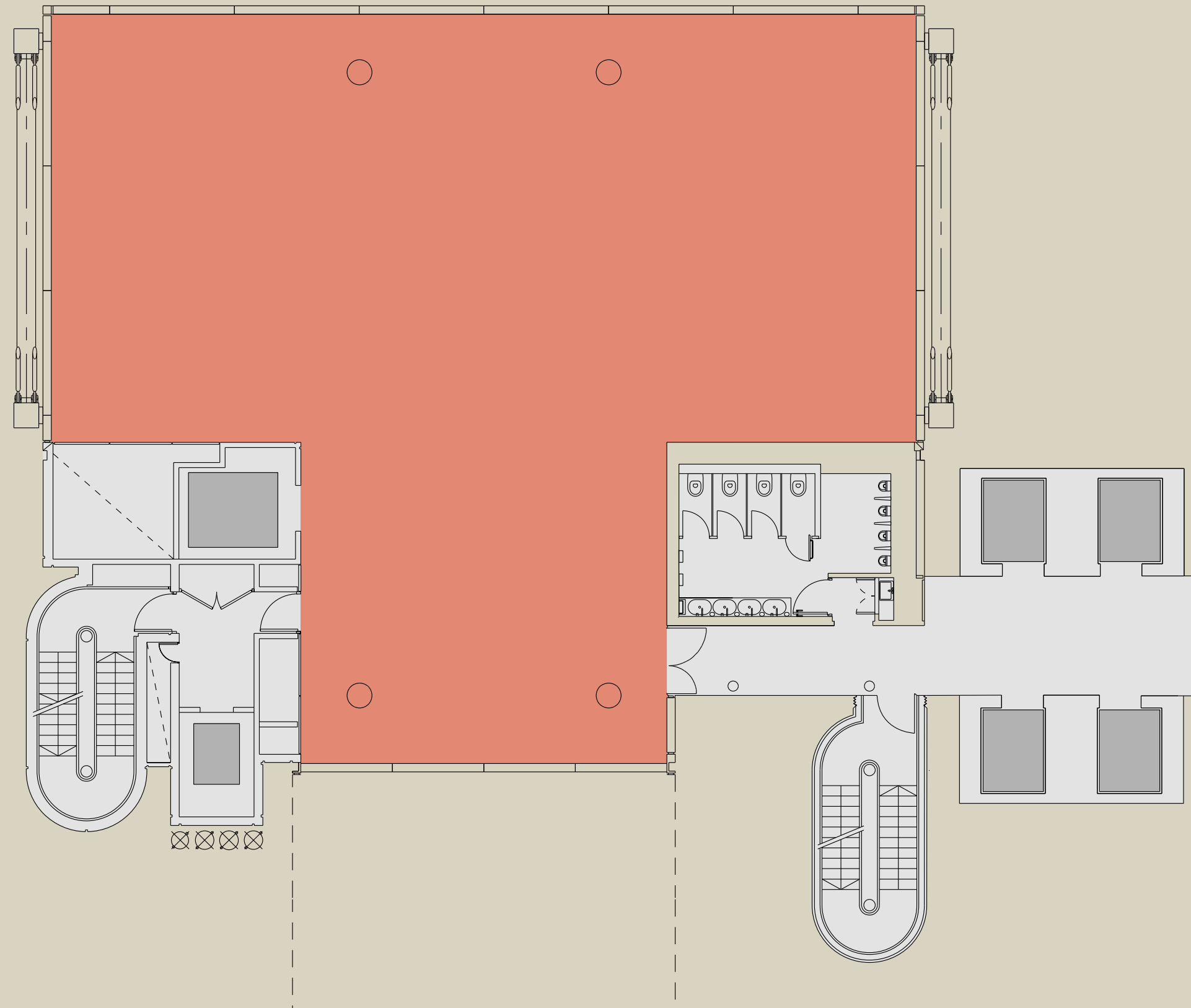
WORK SPACE

- Specification
- Schedule of areas
- Floor plans
- Indicative visuals
- Space plans
- Gallery

LOCATION

- Connections
- Hot-Spots
- Amenities
- Green Space
- In Good Company
- Gallery

- Ground
- 1st floor
- 2nd floor
- 3rd floor
- 4th floor
- 5th floor
- 6th floor
- 7th floor
- 15th floor



15TH FLOOR

2,997 SQ FT
278.4 SQ M

KEY

- Office
- Core

88 Wood Street.

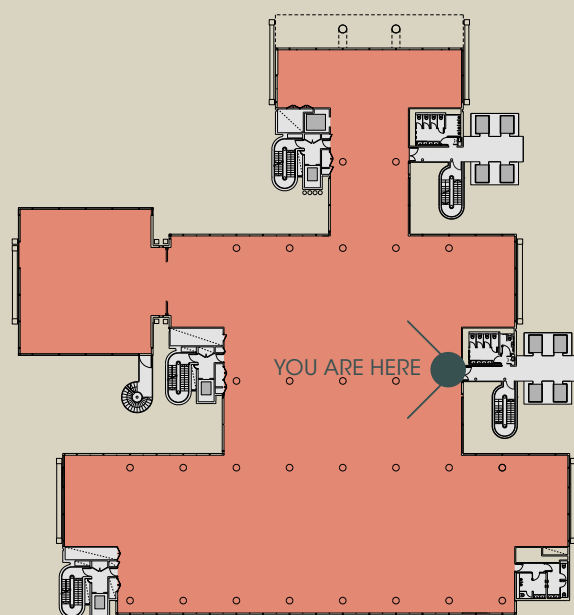
OVERVIEW

WORK SPACE

- Specification
- Schedule of areas
- Floor plans
- Indicative visuals
- Space plans
- Gallery

LOCATION

- Connections
- Hot-Spots
- Amenities
- Green Space
- In Good Company
- Gallery



CGI image of 3rd floor reception

88 Wood Street.

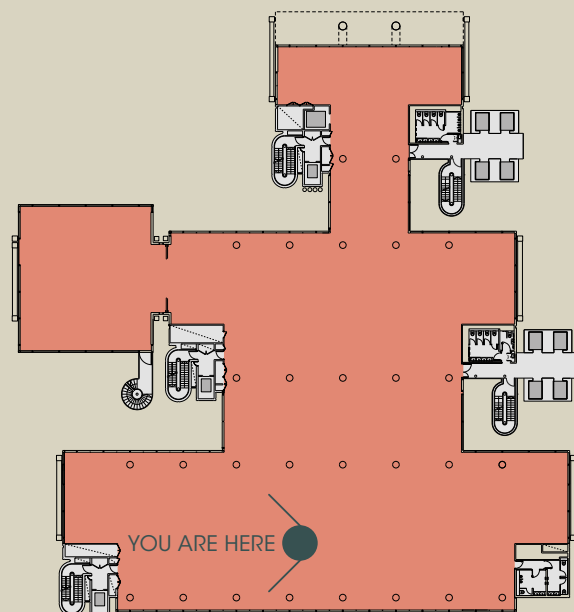
OVERVIEW

WORK SPACE

- Specification
- Schedule of areas
- Floor plans
- Indicative visuals
- Space plans
- Gallery

LOCATION

- Connections
- Hot-Spots
- Amenities
- Green Space
- In Good Company
- Gallery



CGI image of 3rd floor office space

88 Wood Street.

OVERVIEW

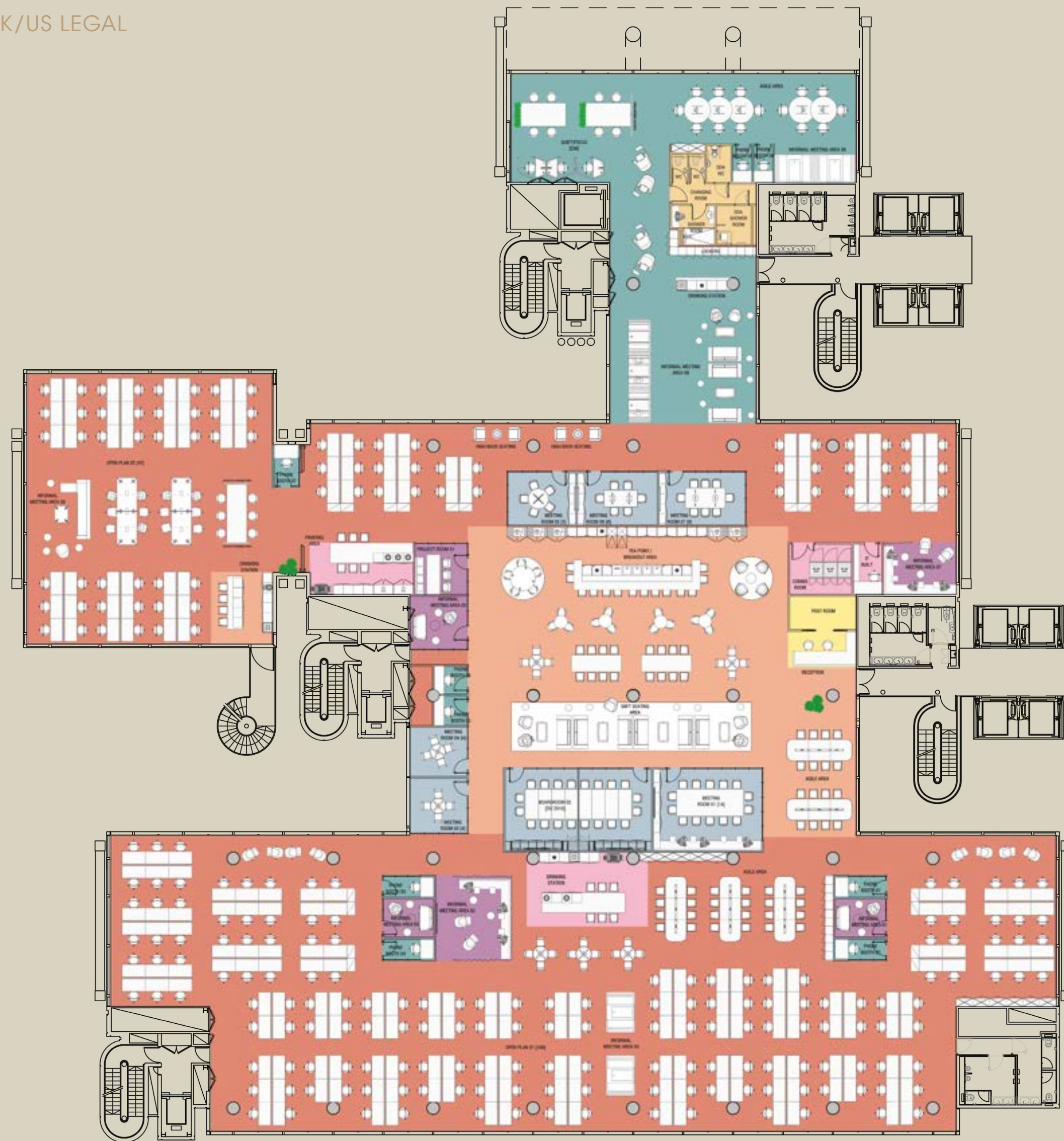
WORK SPACE

- Specification
- Schedule of areas
- Floor plans
- Indicative visuals
- Space plans
- Gallery

LOCATION

- Connections
- Hot-Spots
- Amenities
- Green Space
- In Good Company
- Gallery

- 3rd floor
- FINANCIAL
- TMT
- UK/US LEGAL



3RD FLOOR FINANCIAL

23,911 SQ FT (2,221.4 SQ M)

Total workstations: 242
Occupancy density: 1:9

Office area:

Open plan assigned desks 242
Agile work points 64

Meeting rooms:

Boardroom 20prs with moving wall 1
Meeting rooms 14prs 1
Meeting room 8prs 1
Meeting room 6prs 1
Meeting room 5prs 1
Meeting room 4prs 2

KEY

- Open Plan Area
- Informal meeting area/Touch down area
- Meeting room
- Tea point/ Breakout area/Client lounge area
- Reception
- Facilities
- Quiet Area
- Additional toilet / Changing room

88 Wood Street.

OVERVIEW

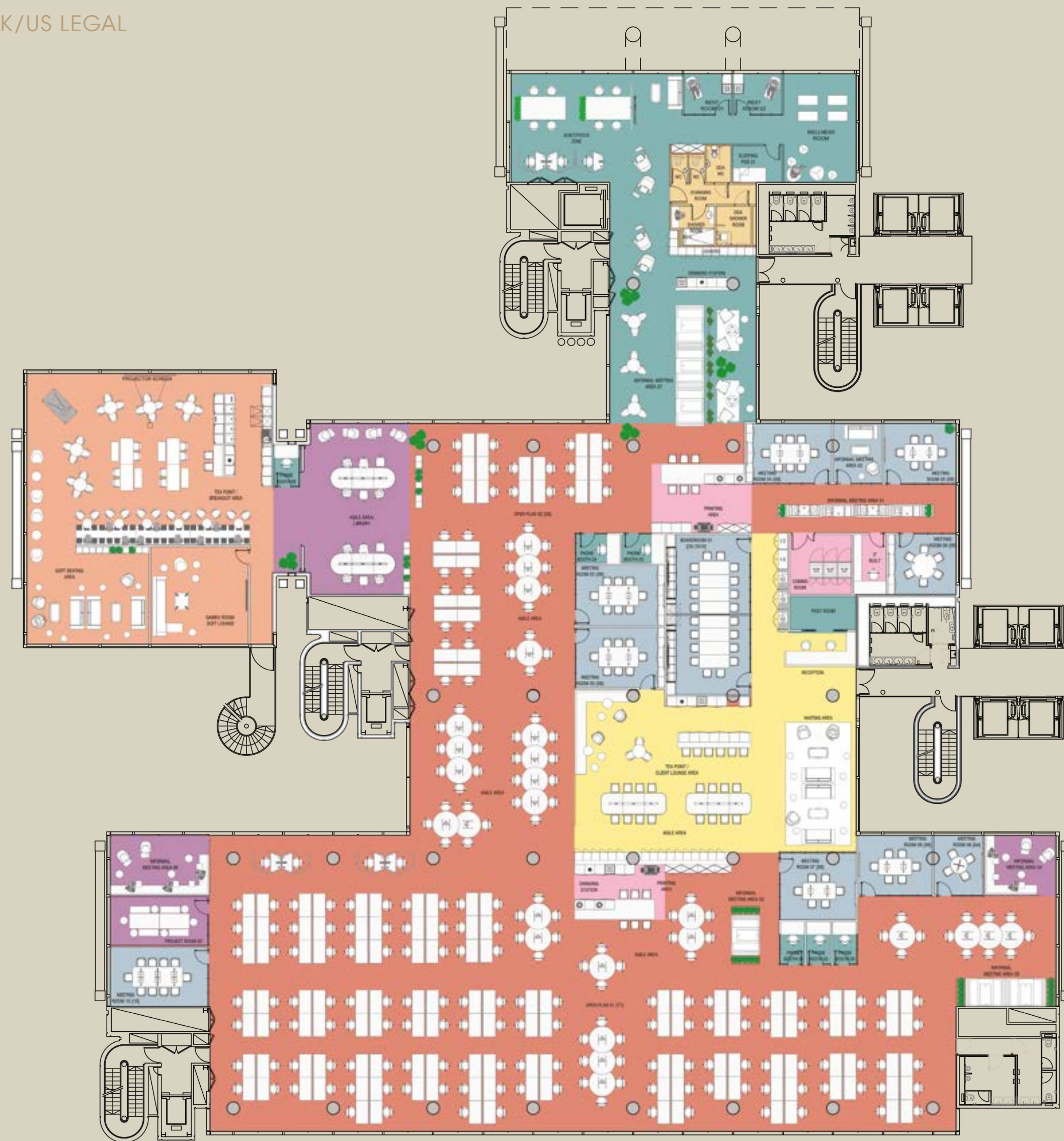
WORK SPACE

- Specification
- Schedule of areas
- Floor plans
- Indicative visuals
- Space plans
- Gallery

LOCATION

- Connections
- Hot-Spots
- Amenities
- Green Space
- In Good Company
- Gallery

- 3rd floor
- FINANCIAL
- TMT
- UK/US LEGAL



3RD FLOOR

TMT

23,911 SQ FT (2,221.4 SQ M)

Total workstations: 185
Occupancy density: 1:12

Office area:

Open plan assigned desks 105
Agile work points 80

Meeting rooms:

Boardroom 20 prs with moving wall 1
Meeting rooms 10prs 1
Meeting room 8prs 3
Meeting room 6prs 4
Meeting room 4prs 1

KEY

- Open Plan Area
- Informal meeting area/Touch down area
- Meeting room
- Tea point/ Breakout area/Client lounge area
- Reception
- Facilities
- Quiet Area
- Additional toilet / Changing room

88 Wood Street.

OVERVIEW

WORK SPACE

- Specification
- Schedule of areas
- Floor plans
- Indicative visuals
- Space plans
- Gallery

LOCATION

- Connections
- Hot-Spots
- Amenities
- Green Space
- In Good Company
- Gallery

- 3rd floor
- FINANCIAL
- TMT
- UK/US LEGAL



3RD FLOOR

US/UK LEGAL

23,911 SQ FT (2,221.4 SQ M)

Total workstations: 123
Occupancy density: 1:18

Office area:

1 prs Executive office 22
2 prs Office 19
3 prs Offices 2
Open plan assigned desks 44
Agile work points 13

Meeting rooms:

Boardroom 20prs with moving wall 1
Meeting rooms 12 prs 1
Meeting rooms 10prs 2
Meeting room 8prs 1
Meeting room 6prs 2
Meeting room 4prs 5

KEY

- Open Plan Area
- Private Office
- Meeting room
- Informal meeting area/Touch down area
- Reception
- Facilities
- Quiet Area
- Tea point/ Breakout area/Client lounge area
- Additional toilet / Changing room

88 Wood Street.

OVERVIEW

WORK SPACE

- Specification
- Schedule of areas
- Floor plans
- Indicative visuals
- Space plans
- Gallery

LOCATION

- Connections
- Hot-Spots
- Amenities
- Green Space
- In Good Company
- Gallery



5TH FLOOR

UK HYBRID/LEGAL

21,900 SQ FT (2,034.6 SQ M)

Total workstations: 220
Occupancy density: 1:9.25

Office area:
1 prs Private office 11

Meeting rooms: 10
Meeting rooms 12 prs 1
Meeting room 8prs 1
Meeting room 6prs 5
Meeting room 4prs 10
Meeting room 3prs 4

KEY

■ Open Plan Area	■ Reception
■ Meeting room	■ Utility/Comms Area
■ Tea point/ Breakout area/Client lounge area	■ Quiet Area
■ Private Office	

88 Wood Street.

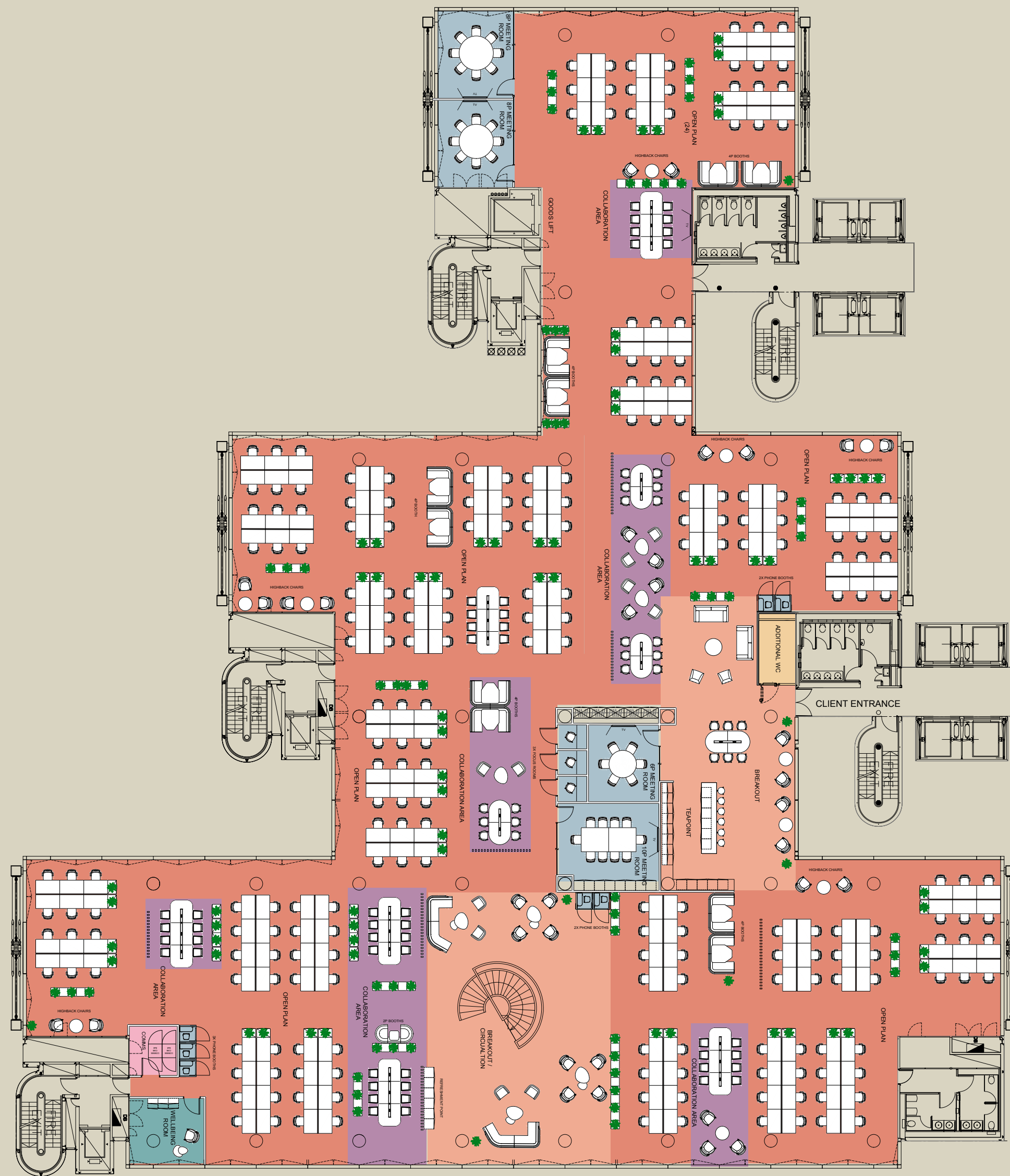
OVERVIEW

WORK SPACE

- Specification
- Schedule of areas
- Floor plans
- Indicative visuals
- Space plans
- Gallery

LOCATION

- Connections
- Hot-Spots
- Amenities
- Green Space
- In Good Company
- Gallery



7TH FLOOR

OPEN PLAN

21,897 SQ FT (2,034.3 SQ M)

Total workstations: 226

Occupancy density: 1:9

Meeting rooms: 10

Meeting rooms 10prs 1

Meeting room 8prs 2

Meeting room 6prs 1

Focus room 1prs 3

KEY

- Open Plan Area
- Informal meeting area/Touch down area
- Meeting room
- Tea point/ Breakout area/Client lounge area
- Utility/Comms Area
- Quiet Area
- Additional toilet / Changing room

88 Wood Street.

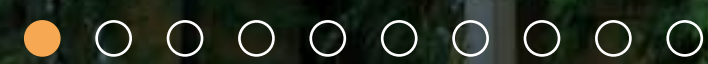
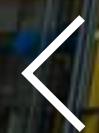
OVERVIEW

WORK SPACE

- Specification
- Schedule of areas
- Floor plans
- Indicative visuals
- Space plans
- Gallery

LOCATION

- Connections
- Hot-Spots
- Amenities
- Green Space
- In Good Company
- Gallery



88 Wood Street.

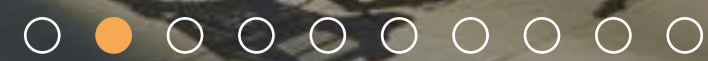
OVERVIEW

WORK SPACE

- Specification
- Schedule of areas
- Floor plans
- Indicative visuals
- Space plans
- Gallery

LOCATION

- Connections
- Hot-Spots
- Amenities
- Green Space
- In Good Company
- Gallery



88 Wood Street

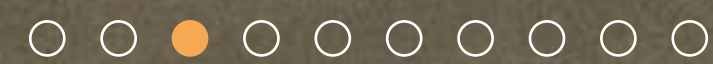
OVERVIEW

WORK SPACE

- Specification
- Schedule of areas
- Floor plans
- Indicative visuals
- Space plans
- Gallery

LOCATION

- Connections
- Hot-Spots
- Amenities
- Green Space
- In Good Company
- Gallery



88 Wood Street.

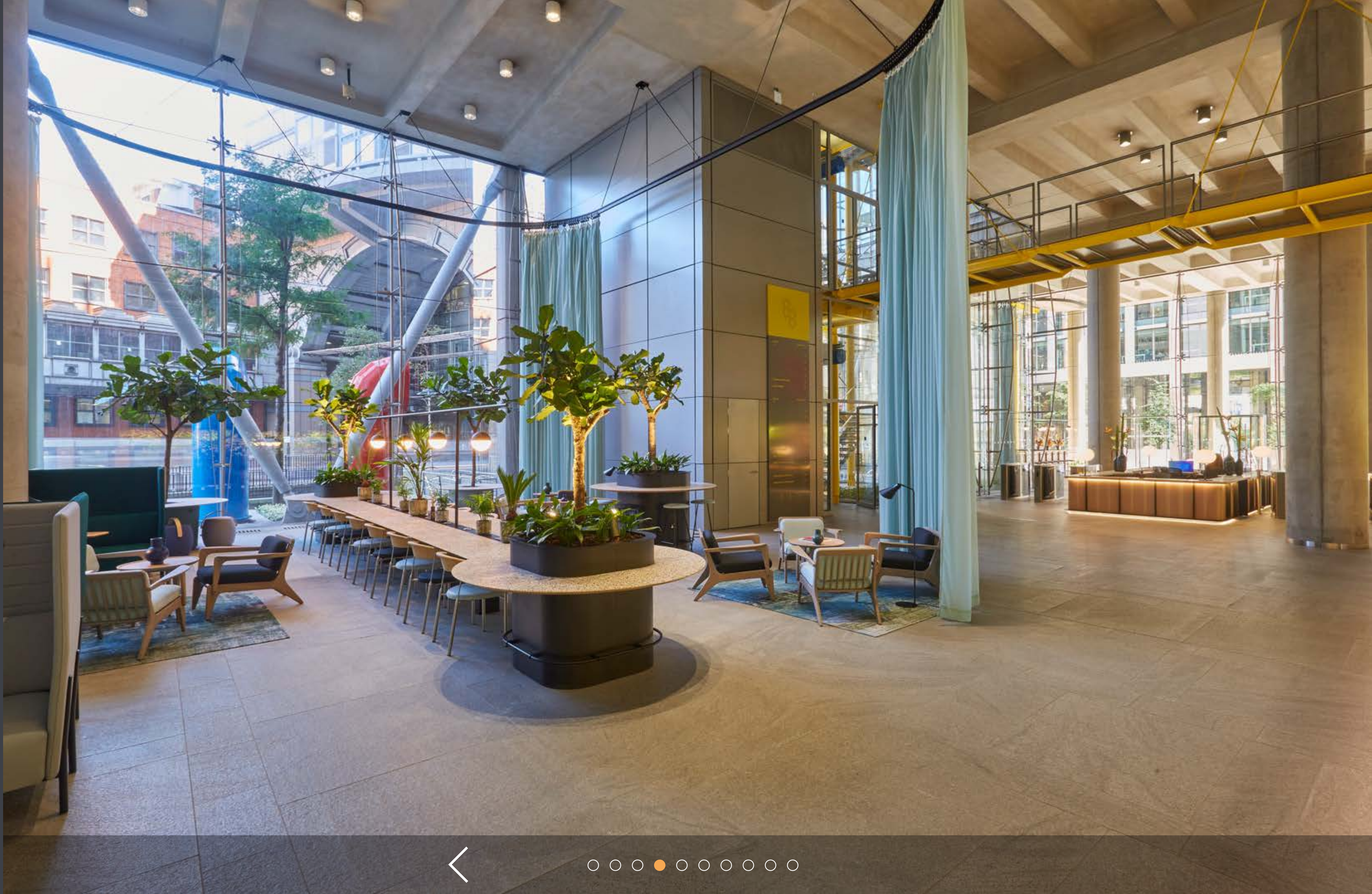
OVERVIEW

WORK SPACE

- Specification
- Schedule of areas
- Floor plans
- Indicative visuals
- Space plans
- Gallery

LOCATION

- Connections
- Hot-Spots
- Amenities
- Green Space
- In Good Company
- Gallery



88 Wood Street.

OVERVIEW

WORK SPACE

- Specification
- Schedule of areas
- Floor plans
- Indicative visuals
- Space plans
- Gallery

LOCATION

- Connections
- Hot-Spots
- Amenities
- Green Space
- In Good Company
- Gallery



88 Wood Street.

OVERVIEW

WORK SPACE

- Specification
- Schedule of areas
- Floor plans
- Indicative visuals
- Space plans
- Gallery

LOCATION

- Connections
- Hot-Spots
- Amenities
- Green Space
- In Good Company
- Gallery



88 Wood Street.

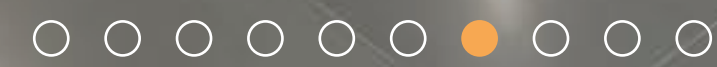
OVERVIEW

WORK SPACE

- Specification
- Schedule of areas
- Floor plans
- Indicative visuals
- Space plans
- Gallery

LOCATION

- Connections
- Hot-Spots
- Amenities
- Green Space
- In Good Company
- Gallery



88 Wood Street.

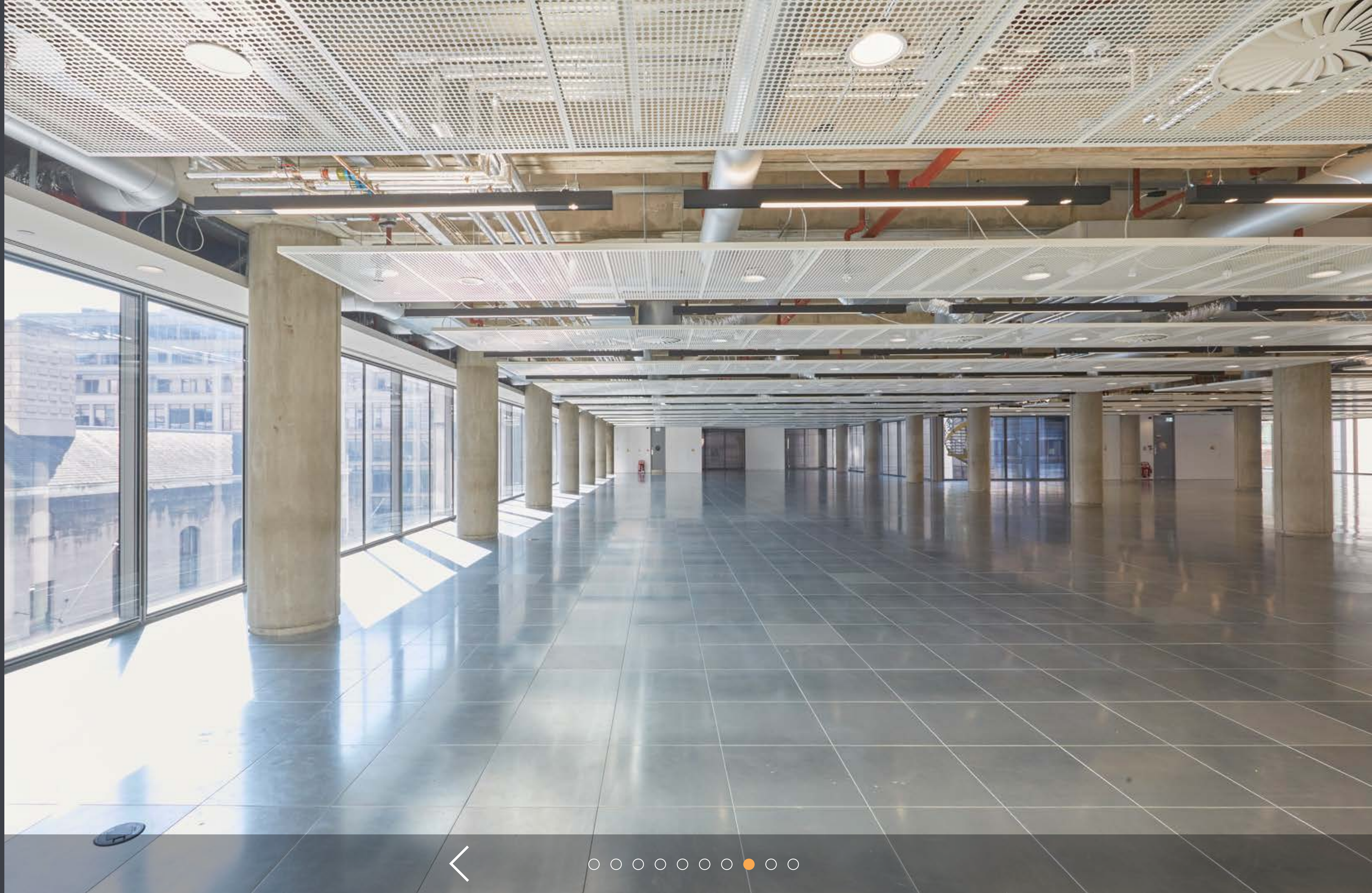
OVERVIEW

WORK SPACE

- Specification
- Schedule of areas
- Floor plans
- Indicative visuals
- Space plans
- Gallery

LOCATION

- Connections
- Hot-Spots
- Amenities
- Green Space
- In Good Company
- Gallery



88 Wood Street.

OVERVIEW

WORK SPACE

- Specification
- Schedule of areas
- Floor plans
- Indicative visuals
- Space plans
- Gallery

LOCATION

- Connections
- Hot-Spots
- Amenities
- Green Space
- In Good Company
- Gallery



88 Wood Street.

OVERVIEW

WORK SPACE

- Specification
- Schedule of areas
- Floor plans
- Indicative visuals
- Space plans
- Gallery

LOCATION

- Connections
- Hot-Spots
- Amenities
- Green Space
- In Good Company
- Gallery



Everything at 88 Wood Street

88
Wood
Street.

88 Wood Street.

CONNECTIONS

OVERVIEW

WORK SPACE

- Specification
- Schedule of areas
- Floor plans
- Indicative visuals
- Space plans
- Gallery

LOCATION

- Connections
- Hot-Spots
- Amenities
- Green Space
- In Good Company
- Gallery



88 Wood Street.

HOT-SPOTS

OVERVIEW

WORK SPACE

- Specification
- Schedule of areas
- Floor plans
- Indicative visuals
- Space plans
- Gallery

LOCATION

- Connections
- Hot-Spots
- Amenities
- Green Space
- In Good Company
- Gallery



88 Wood Street.

AMENITIES

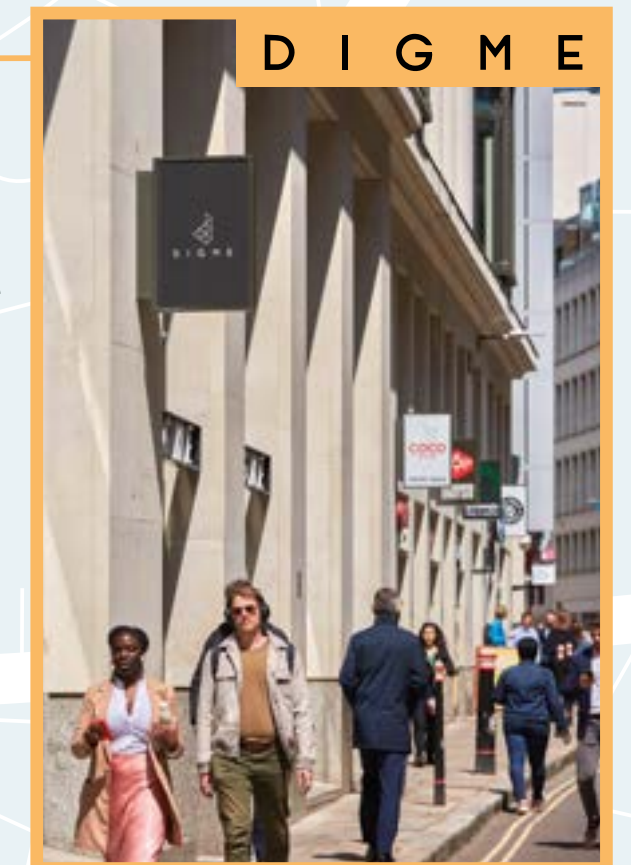
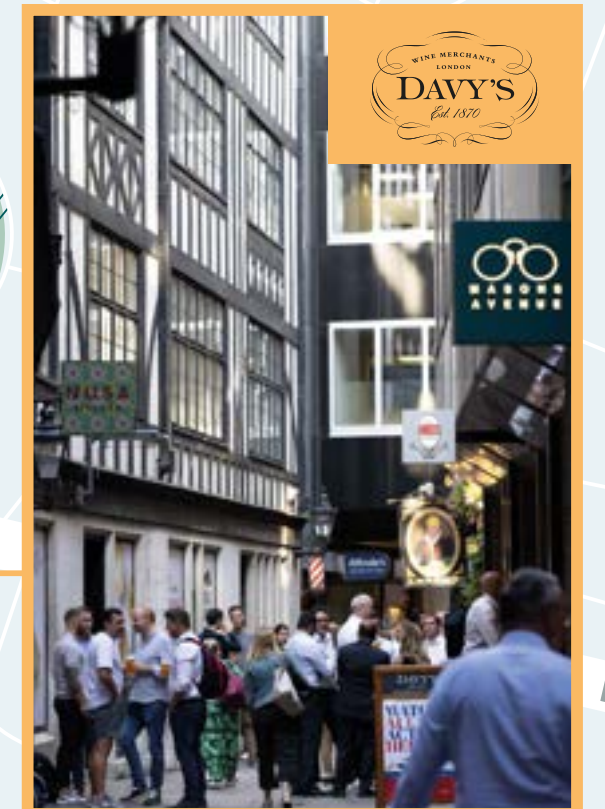
OVERVIEW

WORK SPACE

- Specification
- Schedule of areas
- Floor plans
- Indicative visuals
- Space plans
- Gallery

LOCATION

- Connections
- Hot-Spots
- Amenities
- Green Space
- In Good Company
- Gallery



88 Wood Street.

GREEN SPACE

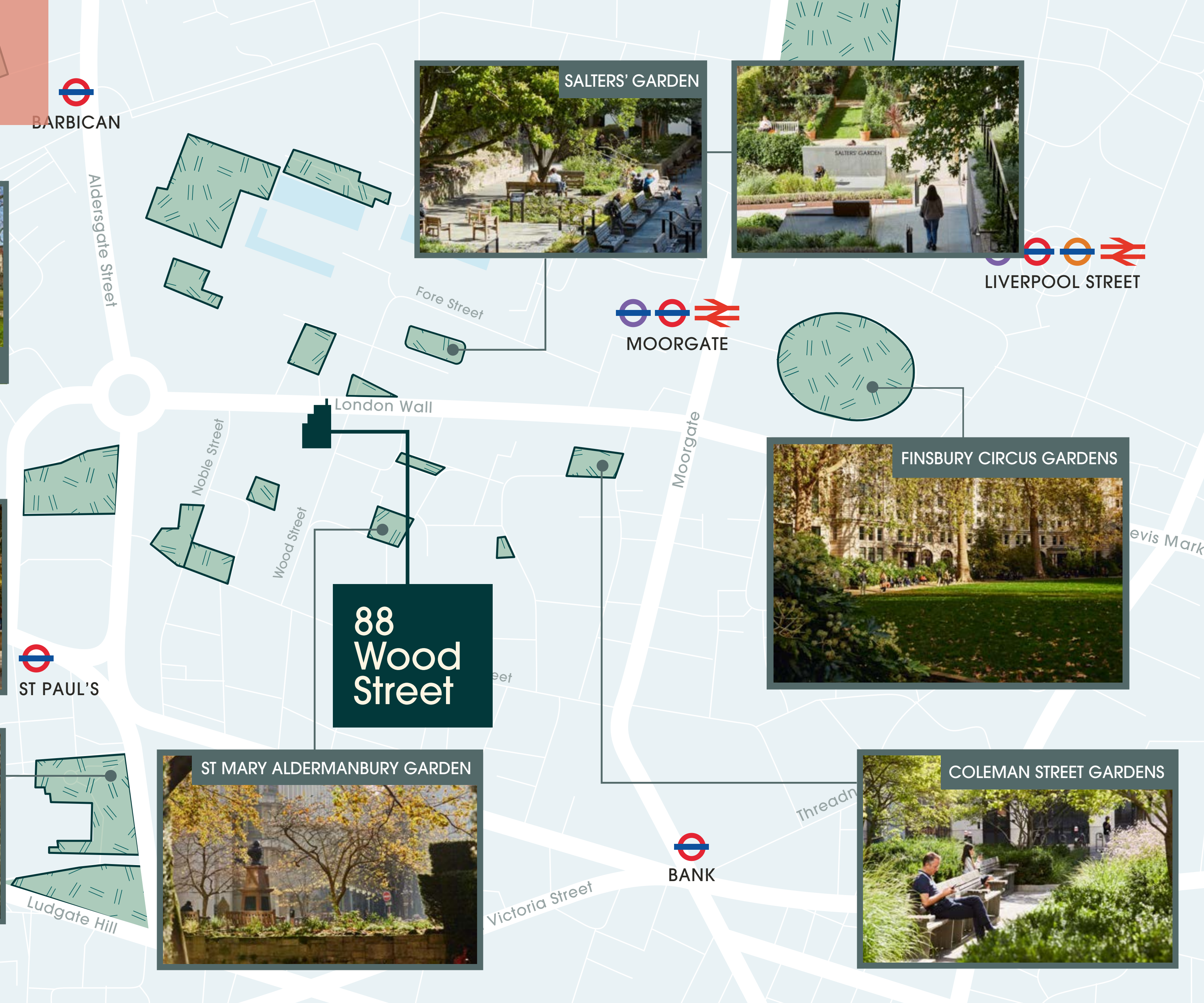
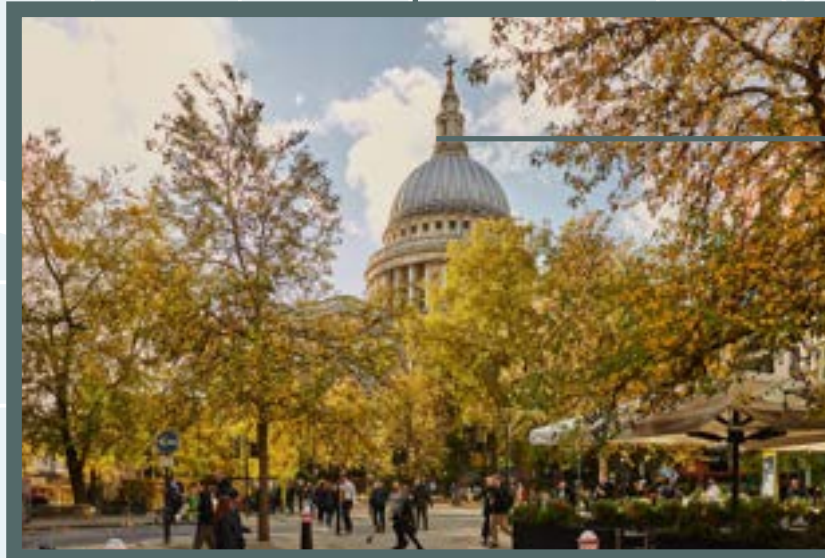
OVERVIEW

WORK SPACE

- Specification
- Schedule of areas
- Floor plans
- Indicative visuals
- Space plans
- Gallery

LOCATION

- Connections
- Hot-Spots
- Amenities
- Green Space
- In Good Company
- Gallery



88 Wood Street.

IN GOOD COMPANY

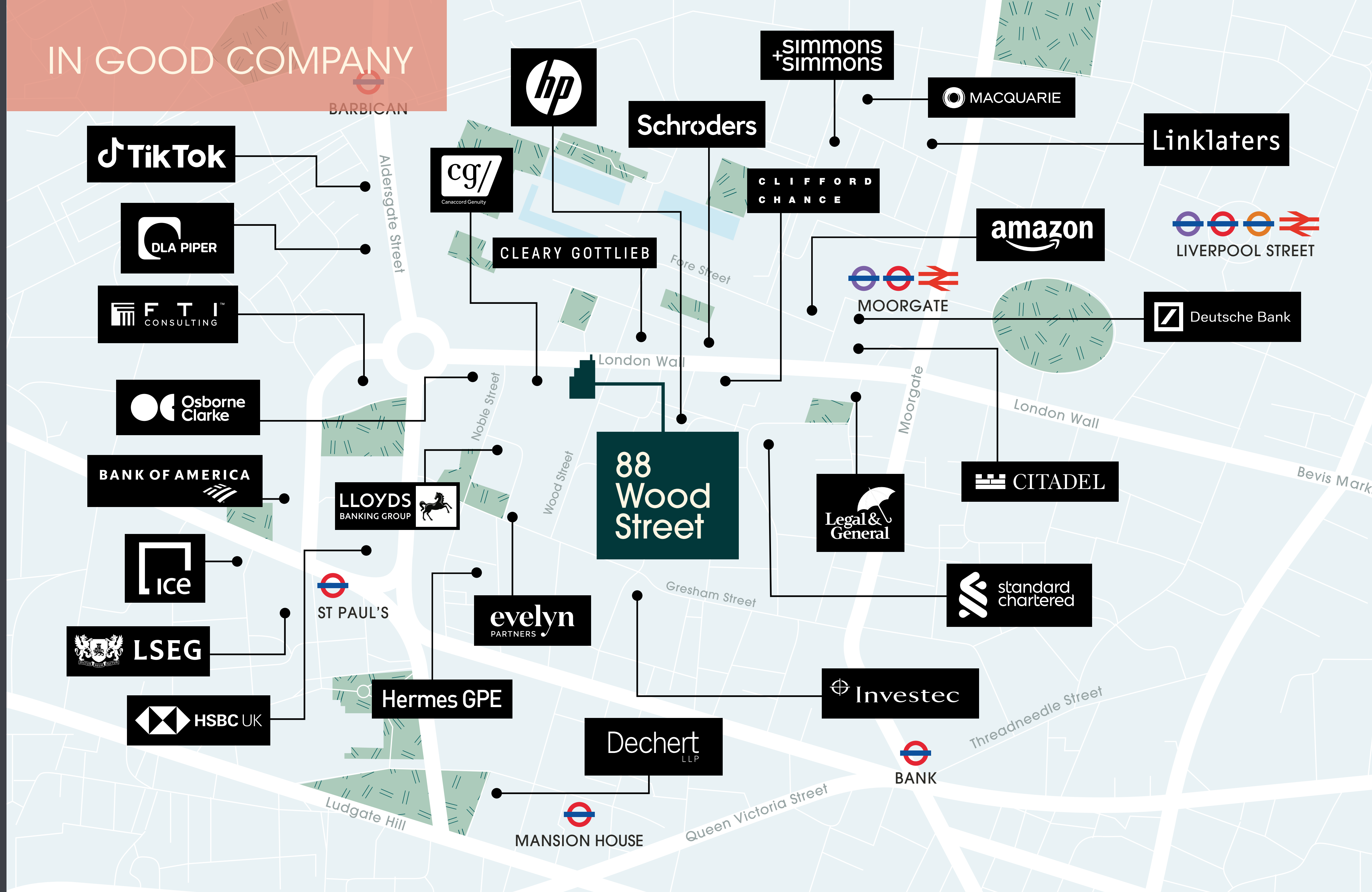
OVERVIEW

WORK SPACE

- Specification
- Schedule of areas
- Floor plans
- Indicative visuals
- Space plans
- Gallery

LOCATION

- Connections
- Hot-Spots
- Amenities
- Green Space
- In Good Company
- Gallery



88 Wood Street.

OVERVIEW

WORK SPACE

- Specification
- Schedule of areas
- Floor plans
- Indicative visuals
- Space plans
- Gallery

LOCATION

- Connections
- Hot-Spots
- Amenities
- Green Space
- In Good Company
- Gallery



88 Wood Street.

OVERVIEW

WORK SPACE

- Specification
- Schedule of areas
- Floor plans
- Indicative visuals
- Space plans
- Gallery

LOCATION

- Connections
- Hot-Spots
- Amenities
- Green Space
- In Good Company
- Gallery



88 Wood Street.

OVERVIEW

WORK SPACE

- Specification
- Schedule of areas
- Floor plans
- Indicative visuals
- Space plans
- Gallery

LOCATION

- Connections
- Hot-Spots
- Amenities
- Green Space
- In Good Company
- Gallery



88 Wood Street.

OVERVIEW

WORK SPACE

- Specification
- Schedule of areas
- Floor plans
- Indicative visuals
- Space plans
- Gallery

LOCATION

- Connections
- Hot-Spots
- Amenities
- Green Space
- In Good Company
- Gallery



88 Wood Street.

OVERVIEW

WORK SPACE

- Specification
- Schedule of areas
- Floor plans
- Indicative visuals
- Space plans
- Gallery

LOCATION

- Connections
- Hot-Spots
- Amenities
- Green Space
- In Good Company
- Gallery



88 Wood Street.

OVERVIEW

WORK SPACE

- Specification
- Schedule of areas
- Floor plans
- Indicative visuals
- Space plans
- Gallery

LOCATION

- Connections
- Hot-Spots
- Amenities
- Green Space
- In Good Company
- Gallery



88 Wood Street.

OVERVIEW

WORK SPACE

- Specification
- Schedule of areas
- Floor plans
- Indicative visuals
- Space plans
- Gallery

LOCATION

- Connections
- Hot-Spots
- Amenities
- Green Space
- In Good Company
- Gallery



PATERNOSTER
SQUARE
EC4



88 Wood Street.

OVERVIEW

WORK SPACE

- Specification
- Schedule of areas
- Floor plans
- Indicative visuals
- Space plans
- Gallery

LOCATION

- Connections
- Hot-Spots
- Amenities
- Green Space
- In Good Company
- Gallery



CONTACT

Lease

New leases available direct from the Landlord.

Terms

Upon application.

Viewing

Strictly through sole letting agents.



Dan Burn

M +44 7515 607 011
dan.burn@rx.london

Frankie Warner Lacey

M +44 7775 895 661
frankie.warnerlacey@rx.london

Alfie John

M +44 7377 885 814
alfie.john@rx.london



Rory Paton

M +44 7900 245 221
rory.paton@jll.com

Sarah Shell

M +44 7808 290 853
sarah.shell@jll.com

Nick Going

M +44 7756 500 466
nick.going@jll.com

88 Wood Street.

88woodstreet.com

DISCLAIMER: The Agents for themselves and for the vendors or lessors of the property whose agents they are give notice that, (i) these particulars are given without responsibility of The Agents or the Vendors or Lessors as a general outline only, for the guidance of prospective purchasers or tenants, and do not constitute the whole or any part of an offer or contract; (ii) The Agents cannot guarantee the accuracy of any description, dimension, references to condition, necessary permissions for use and occupation and other details contained herein and any prospective purchasers or tenants should not rely on them as statements or representations of fact but must satisfy themselves by inspection or otherwise as to the accuracy of each of them; (iii) no employee of The Agents have any authority to make or give any representation or enter into any contract whatsoever in relation to the property; (iv) VAT may be payable on the purchase price and / or rent, all figures are exclusive of VAT, intending purchasers or lessees must satisfy themselves as to the applicable VAT position, if necessary by taking appropriate professional advice; (v) The Joint Agents will not be liable, in negligence or otherwise, for any loss arising from the use of these particulars. December 2023.

Designed and produced by Graphicks | 020 3435 6952 | www.graphicks.co.uk