

Retail

88
Wood
Street.

88
Wood
Street.



OVERVIEW

Welcome to the infinitely iconic 88 Wood Street, designed by Richard Rogers Stirk Harbour + Partners and re-imagined by award-winning architects Morrow + Lorraine.

- An architectural marvel transformed for today's City.
- As beautifully functional and purposeful as ever.
- Designed for fluid and flexible work lives.
- An icon? Perhaps. A way of life? Definitely.

RETAIL

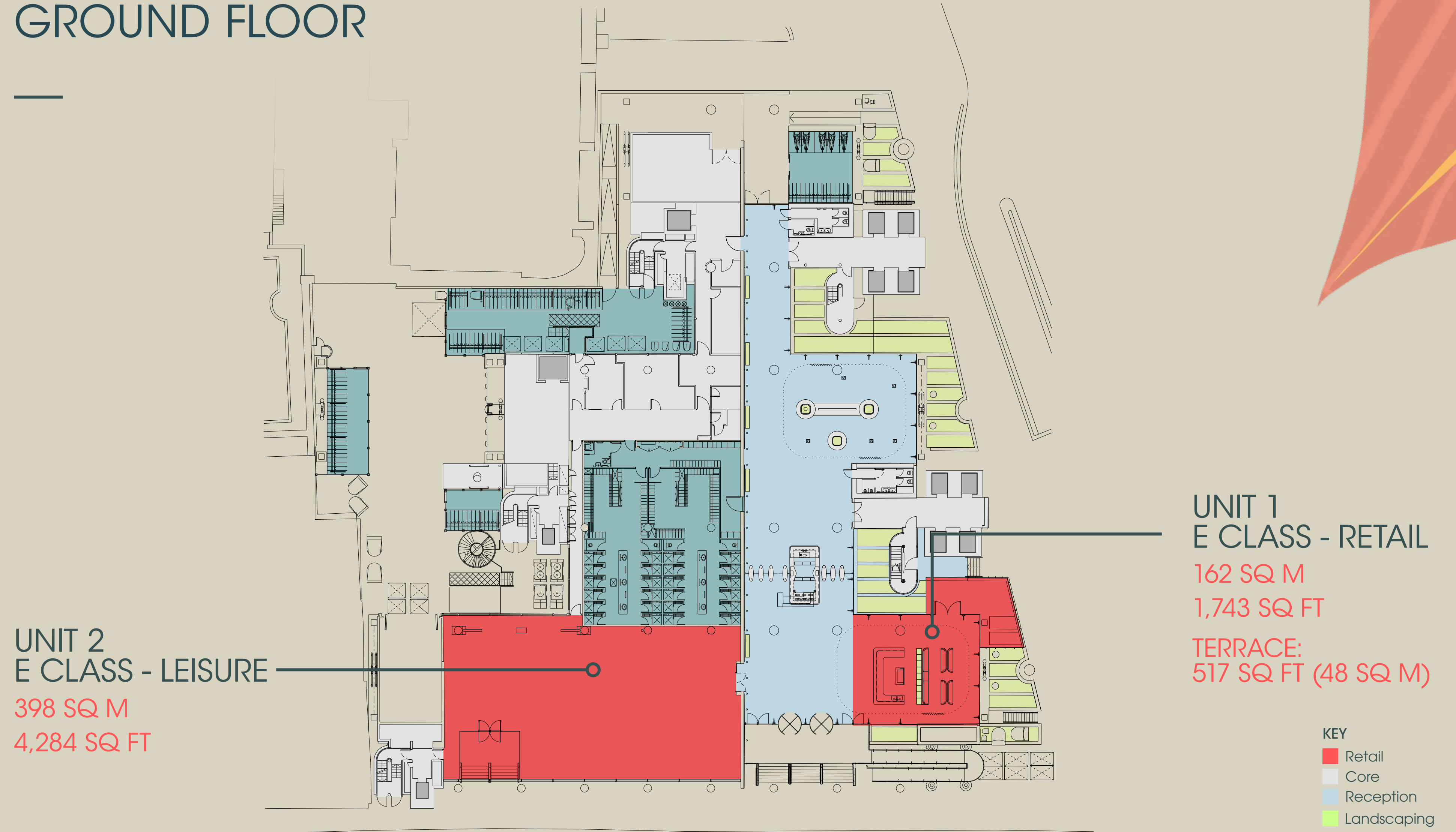
The newly refurbished 88 Wood Street provides up to 6,000 sq ft of D2 leisure space and A1 retail space over ground floor.

The property benefits from excellent transport links with Moorgate, St Paul's, Bank and Barbican within a 10 minute walk.

88 Wood Street is perfectly positioned a short walk from a variety of shops, including **One New Change** and **Cheapside**. The area is home to renowned restaurants with the likes of **The Ivy**, **Coq d'Argent** and **The Ned** as well as a host of cafes, bars, gyms and exciting leisure opportunities. Nearby occupiers include **Pret A Manger**, **Wrap It Up!**, **Black Sheep Coffee** and **Barry's Bootcamp**.



GROUND FLOOR



88
Wood
Street.



★ PRET A MANGER ★



IN THE IMMEDIATE AREA

NESPRESSO



HAWKSMOOR



THE IVY



COQ D'ARGENT



88
Wood
Street.



CONTACT

Handover Condition

Shell and core glazed shop front.
Floor to ceiling height in excess of 3.5m.

Lease

New lease available for a term to be agreed.

Rent

Upon application.

Planning

Unit 1 - E Class (Retail)
Unit 2 - E Class (Leisure)

Rates

Subject to being reassessed.



Josh Braid

T +44 020 7861 1176
M +44 07793 082 342
josh.braid@knightfrank.com

Lizzie Everard

T +44 020 3869 4723
M +44 07773 258 838
lizzie.everard@knightfrank.com

Henrietta Manns

T +44 020 3307 4144
henrietta.manns@knightfrank.com

Everything at 88 Wood Street

88
Wood
Street.

88 Wood Street.



88 Wood Street.

AMENITIES

Restaurants

1. The Ned
2. Hawksmoor
3. The Ivy Asia St Pauls
4. Sushi Samba / Duck & Waffle
5. Coppa Club
6. Burger & Lobster

Bars

1. Coq d'Argent
2. Madisons
3. Sky Garden
4. The Botanist / Broadgate Circle
5. The London Cocktail Club
6. The Anthologist

Leisure / Attractions

1. Barbican Art Gallery
2. Guildhall Gallery
3. Barry's Bootcamp
4. St Pauls Cathedral
5. Bank of England

88 Wood Street.



RETAIL

One New Change

- Calvin Klein
- Hugo Boss
- Hackett
- M&S 'Simply Food'
- H&M
- Cos

Cheapside

- Massimo Dutti
- Leon
- Ted Baker
- Nespresso
- Space NK

The Royal Exchange

- Fortnum & Mason
- Tiffany & Co
- Jo Malone
- Mont Blanc

88 Wood Street.



OCCUPIERS

1. Lloyds TSB
2. Schroders Plc
3. BT Plc
4. Commerzbank
5. Hewlett Packard
6. National Australia Bank
7. Trade Desk
8. Legal & General
9. Standard Chartered Bank
10. London Stock Exchange
11. Investec
12. Osborne Clarke
13. Wilmer Hale
14. DLA Piper
15. Samsung
16. Amazon
17. Unilever
18. AXA Investment Managers
19. WeWork
20. Millbank
21. Bloomberg
22. Deliveroo

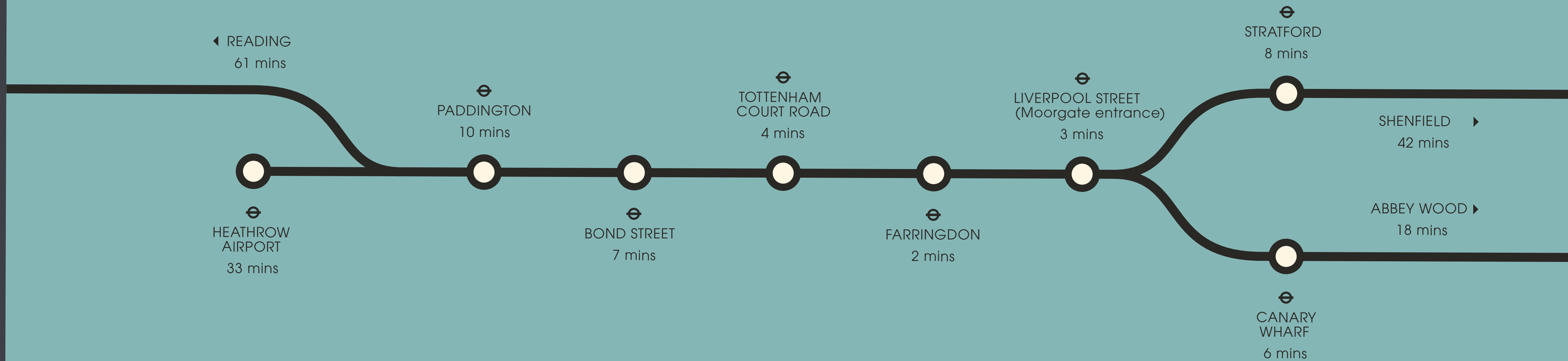
CONNECTIONS



ST PAUL'S		5 MINS
MOORGATE		8 MINS
FARRINGDON (EAST)		10 MINS
LIVERPOOL STREET*		8 MINS
CITY THAMESLINK		7 MINS
BANK		7 MINS
BARBICAN		9 MINS
MANSION HOUSE		6 MINS

All times taken from TFL and Crossrail websites. Crossrail/Elizabeth Line operational from 2021.
*Access to Liverpool Street via Moorgate

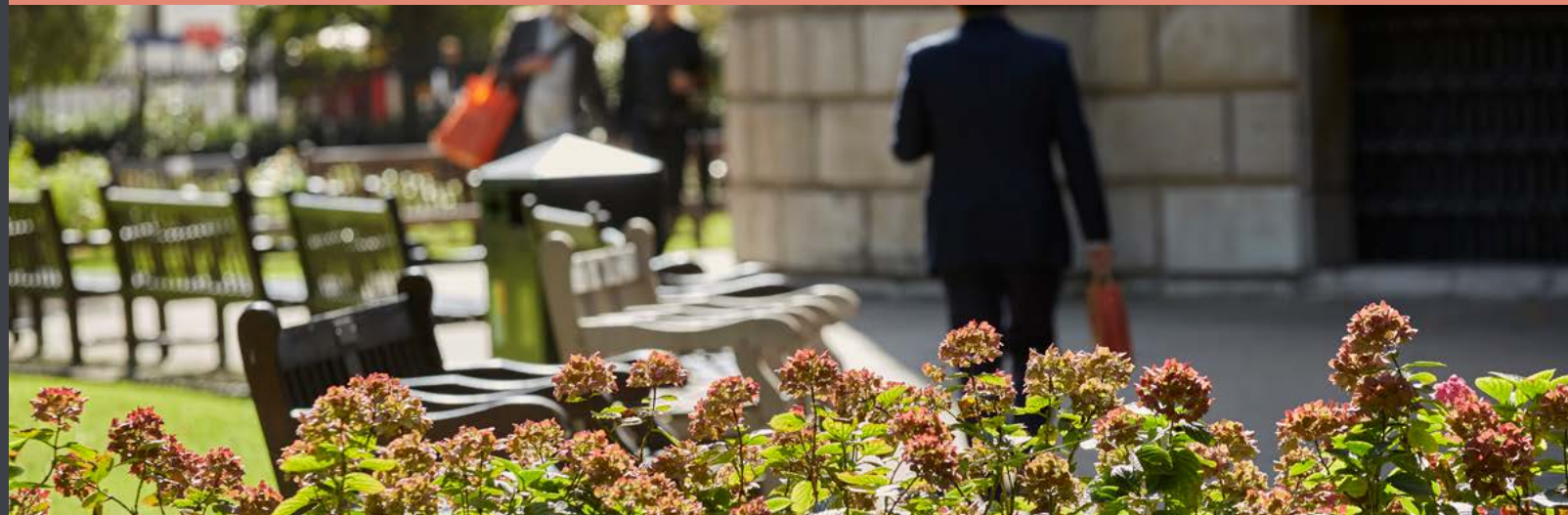
KEY TRAVEL TIMES ON THE ELIZABETH LINE



88
Wood
Street.



28 GREEN
SPACES



RANCO MANCA
SOVRODOGH PIZZA



25
GALLERIES



182 BARS



162 RESTAURANTS



137 CAFES



36 FITNESS
FACILITIES

88
Wood
Street.



LONDON WALL PLACE



88
Wood
Street.



88
Wood
Street.



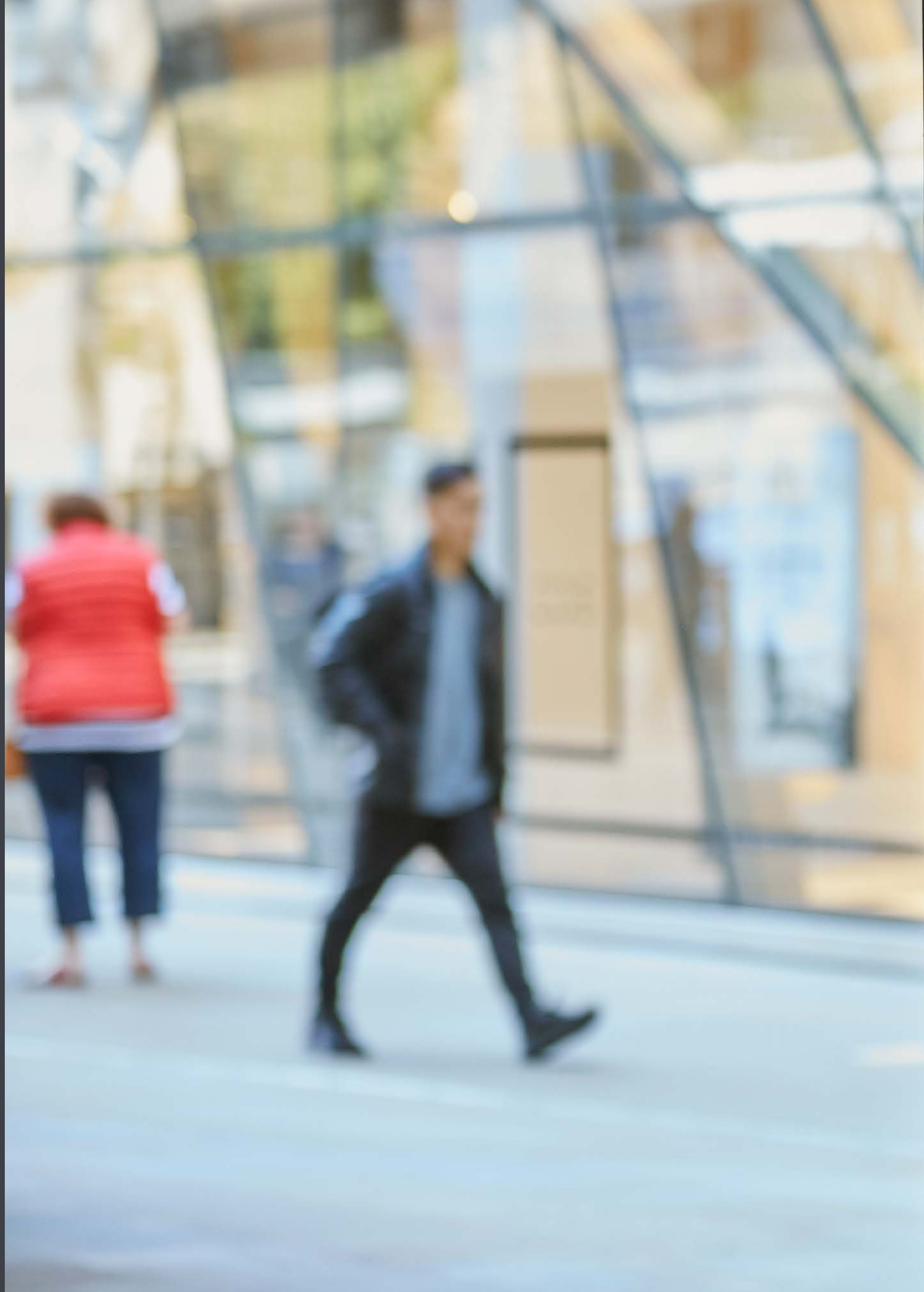
88
Wood
Street.



88
Wood
Street.



88
Wood
Street.

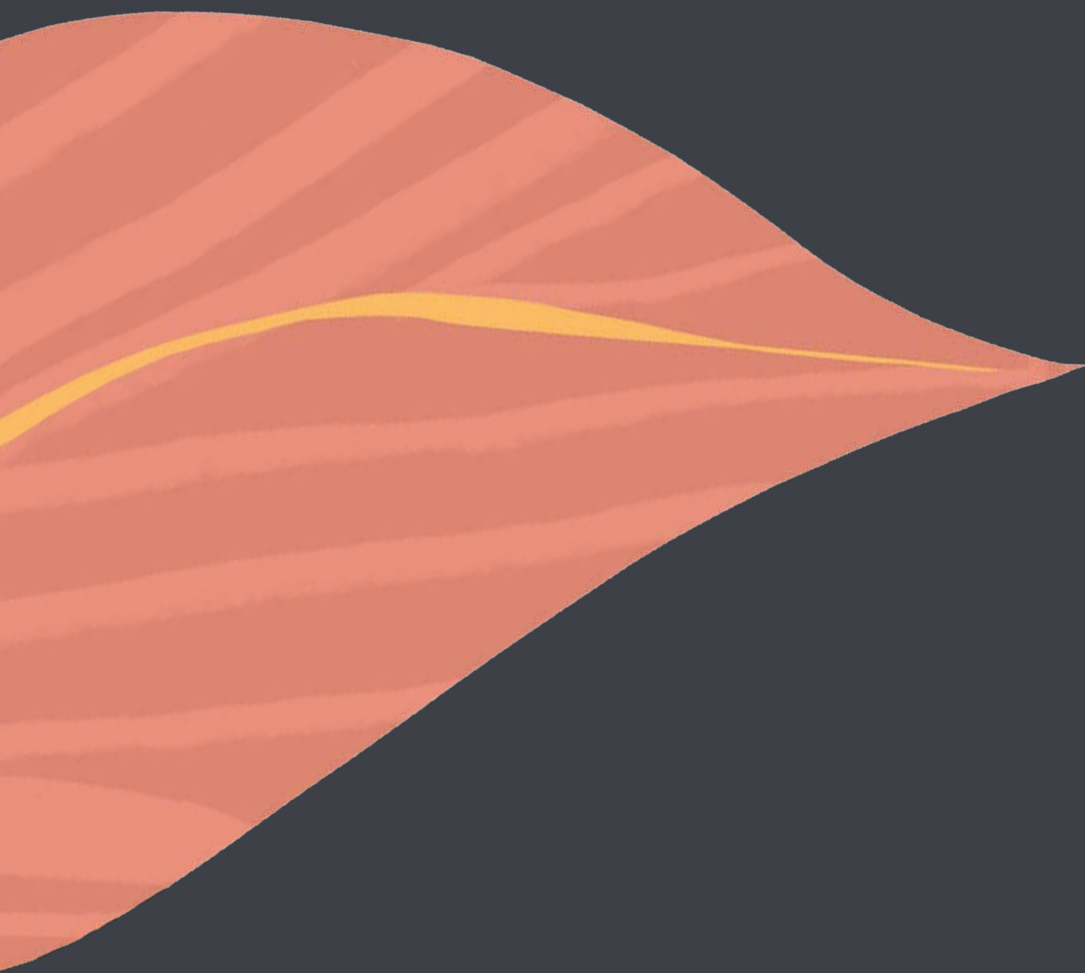
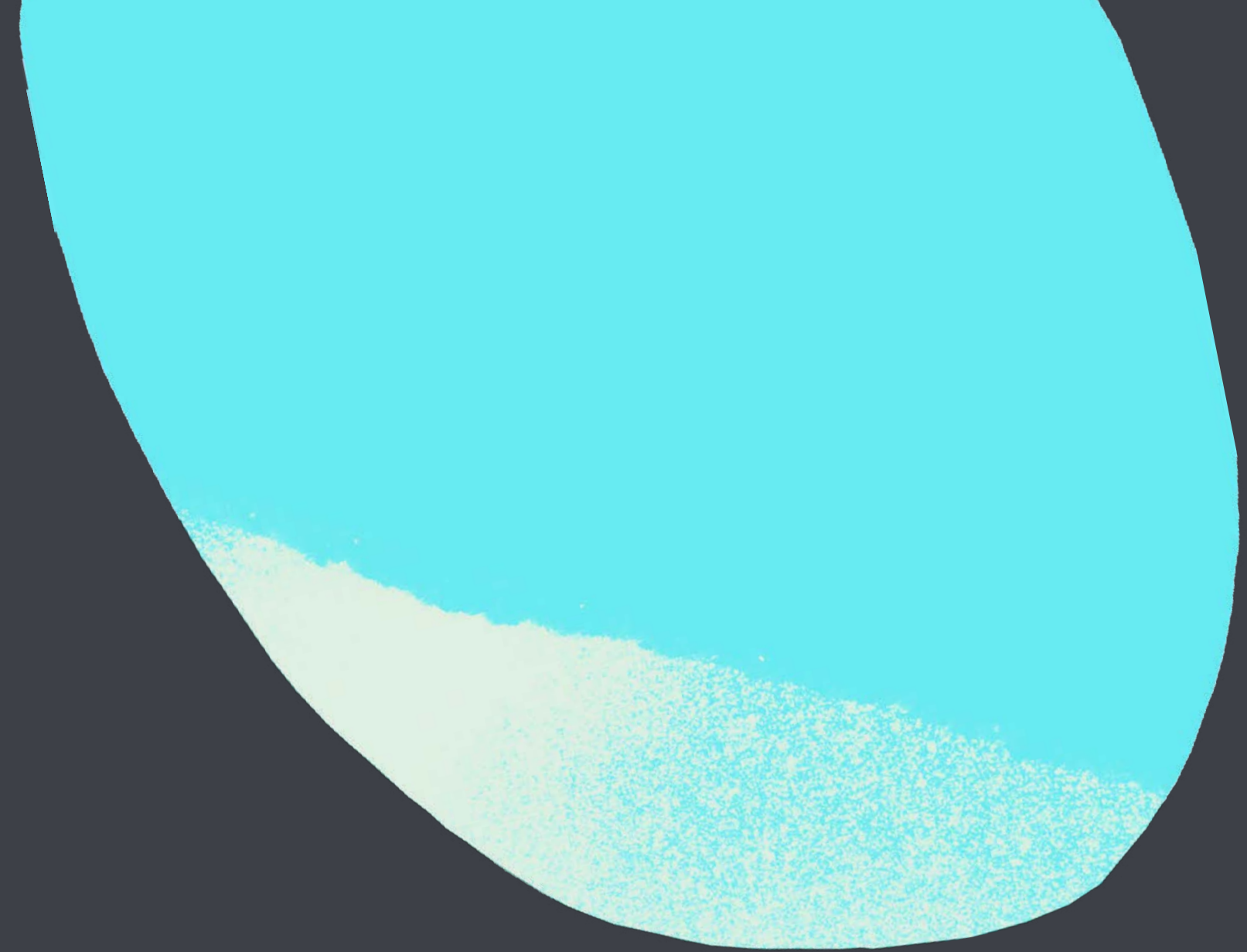


/ONE NEW/ /CHANGE/

Play in the City



88
Wood
Street.



88WOODSTREET.COM